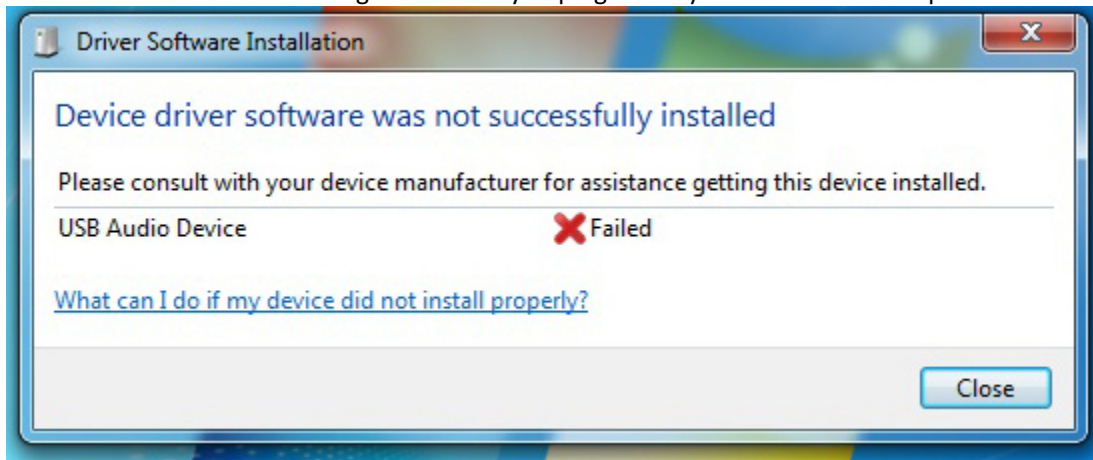


You are reading this friendly guide because you have purchased a Worlde Midi control device, and have encountered the following error when you plug it into your Windows 7 computer:

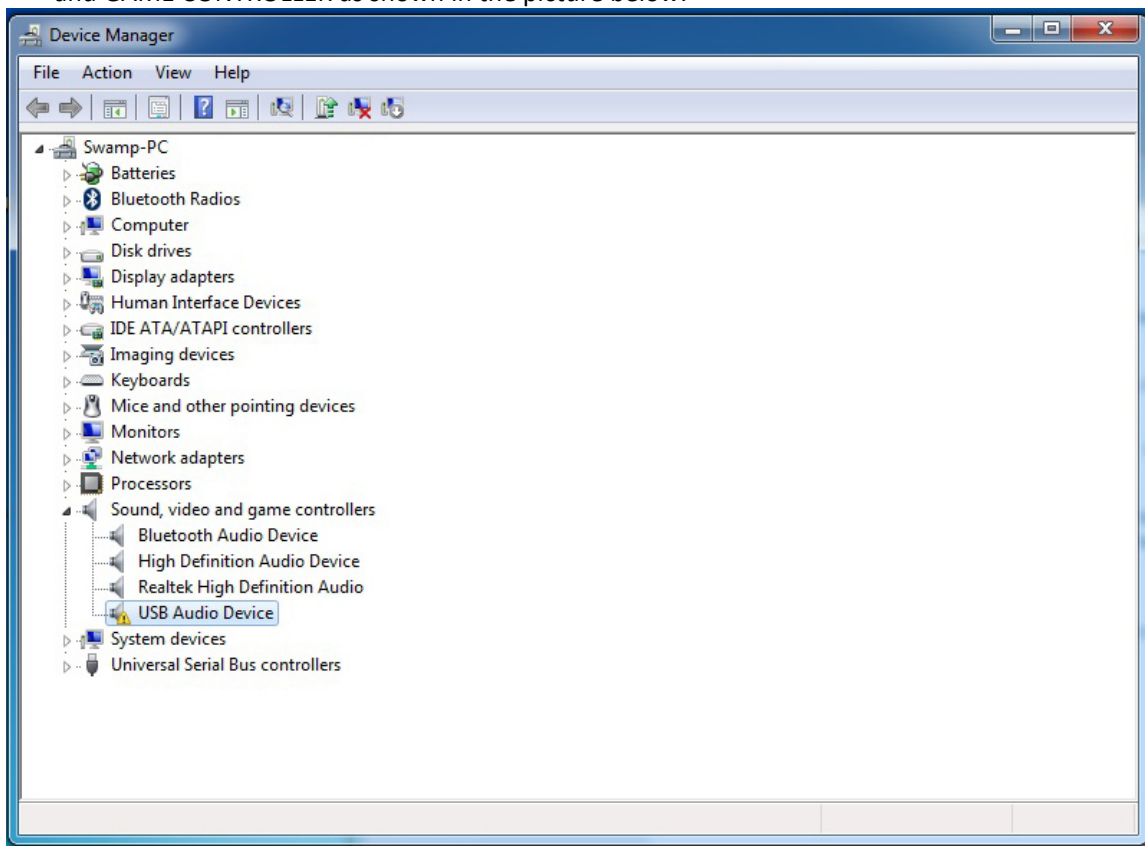


In order to get your Worlde Easy Midi controller device working with windows 7, you will need to manually install the driver.

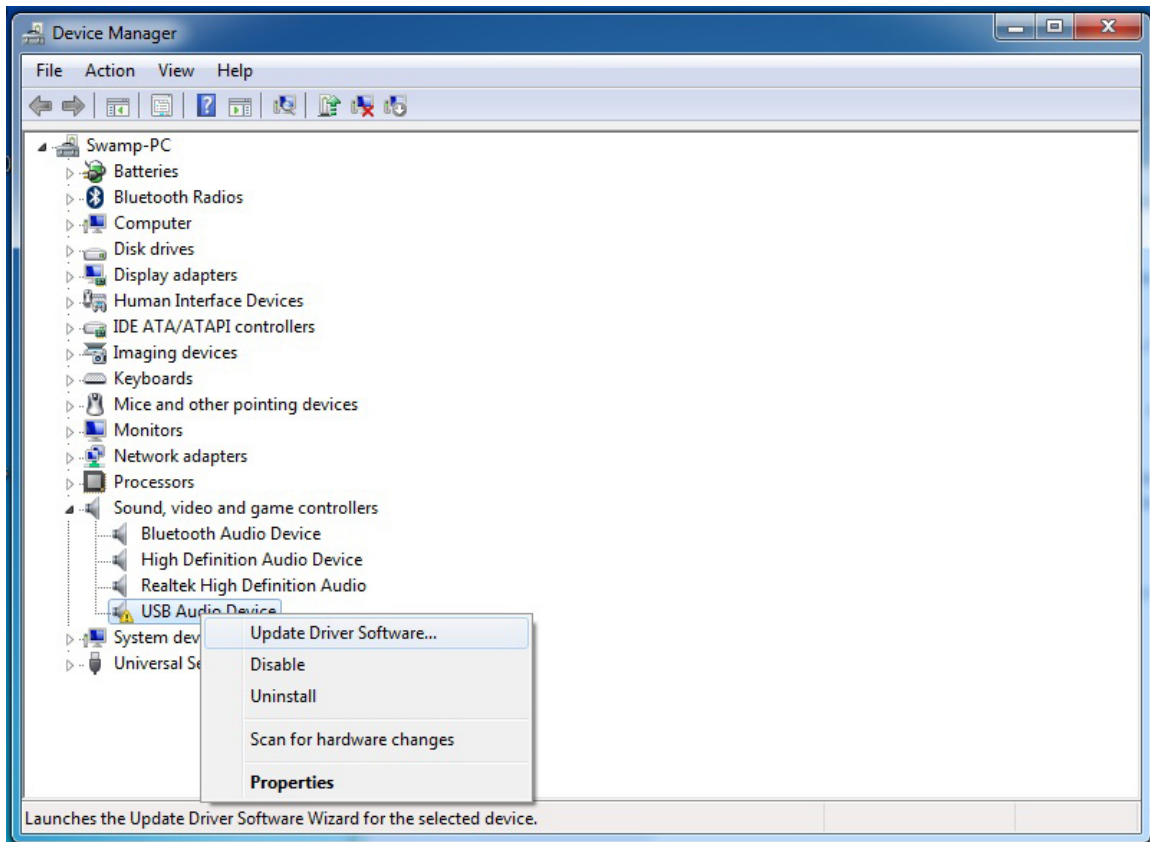
Ask your vendor for the correct driver, which will be provided in a compressed file. To extract the file, use an extraction program such as Winzip or WinAce, which you can download for free here: <http://www.winace.com/>

Once you have extracted the driver, follow the steps below to manually install the driver. Please read carefully before you start to install the driver:

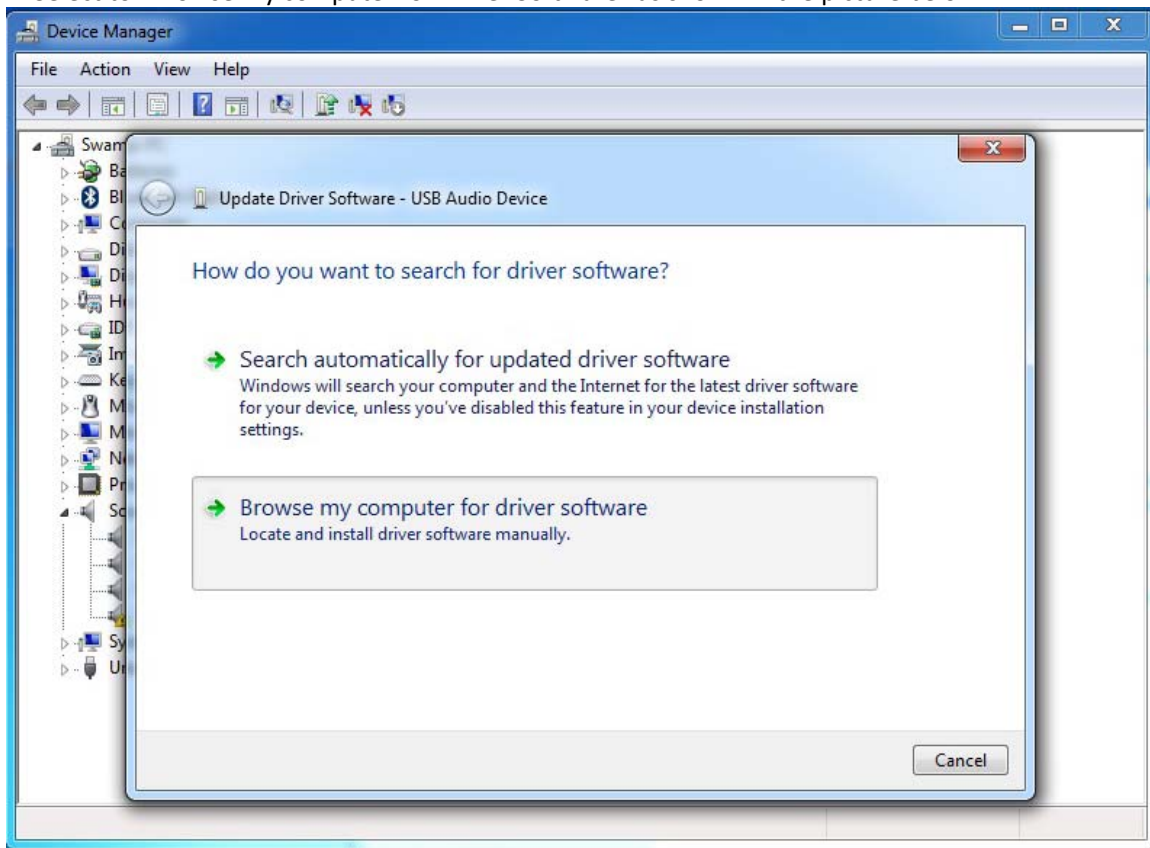
1. Connect your midi controller to your PC running Win7 system. Then go to the Device Manager (>Start>Control Panel>Hardware and Sound> Device Manager).
2. Look for the USB Audio Device (which is marked with “!” at the moment) under SOUND/VIDEO and GAME CONTROLLER as shown in the picture below:



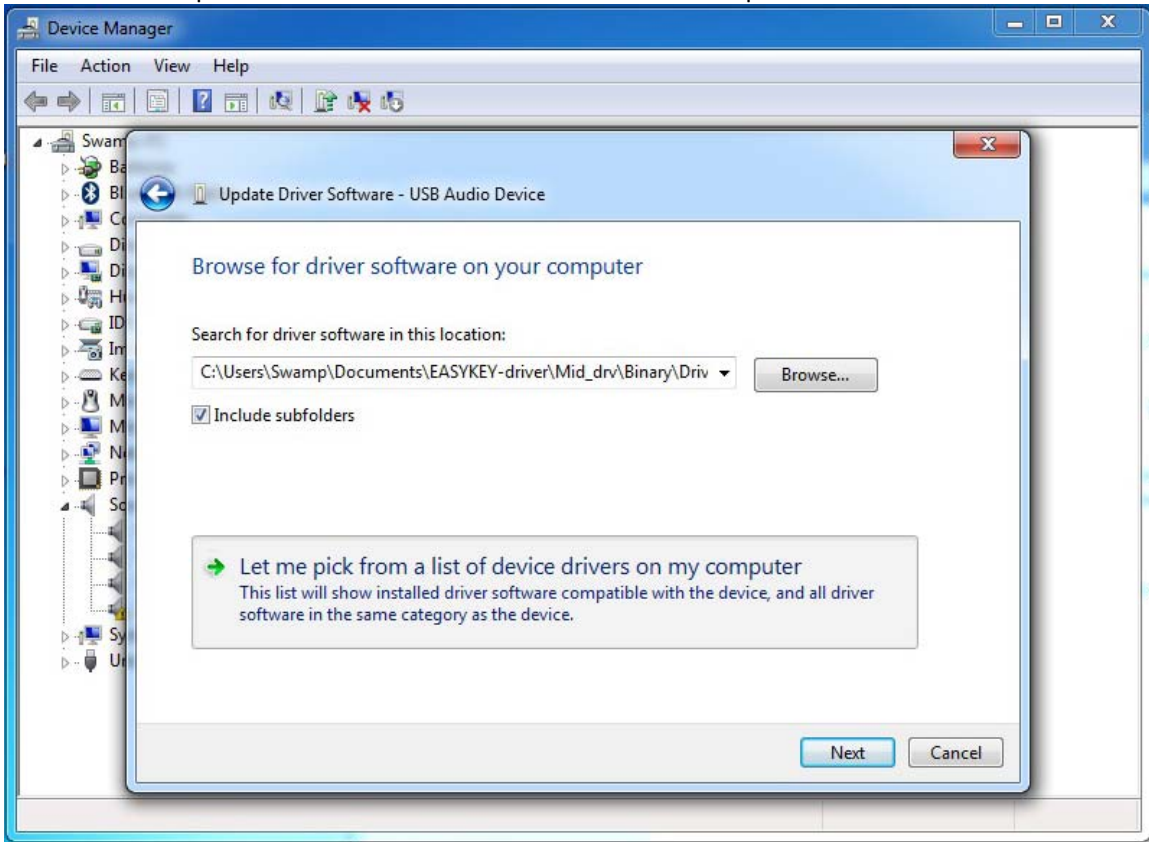
3. Right click on the USB Audio Device and select “Update Driver Software” as shown in the picture below:



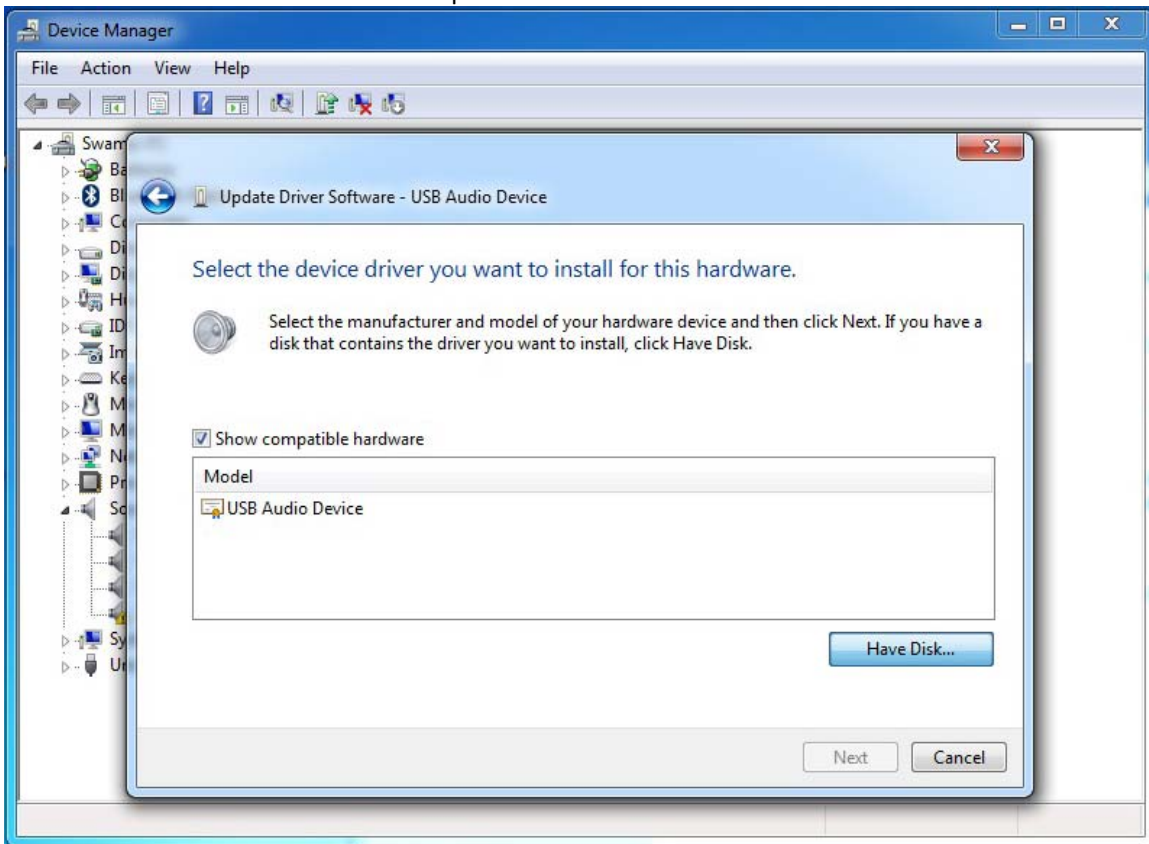
4. Select to “Browse my computer for Driver Software” as shown in the picture below:



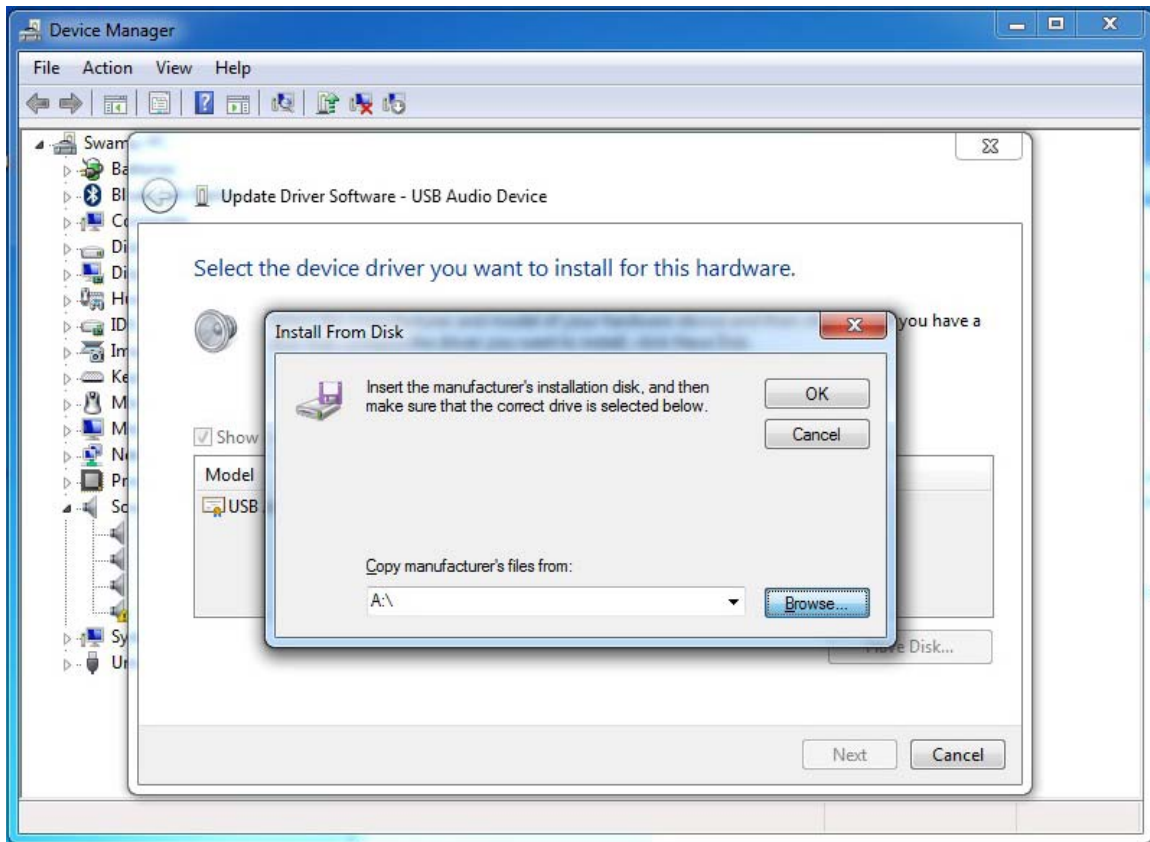
5. Select "Let me pick from a list..." and click next as shown in the picture below :



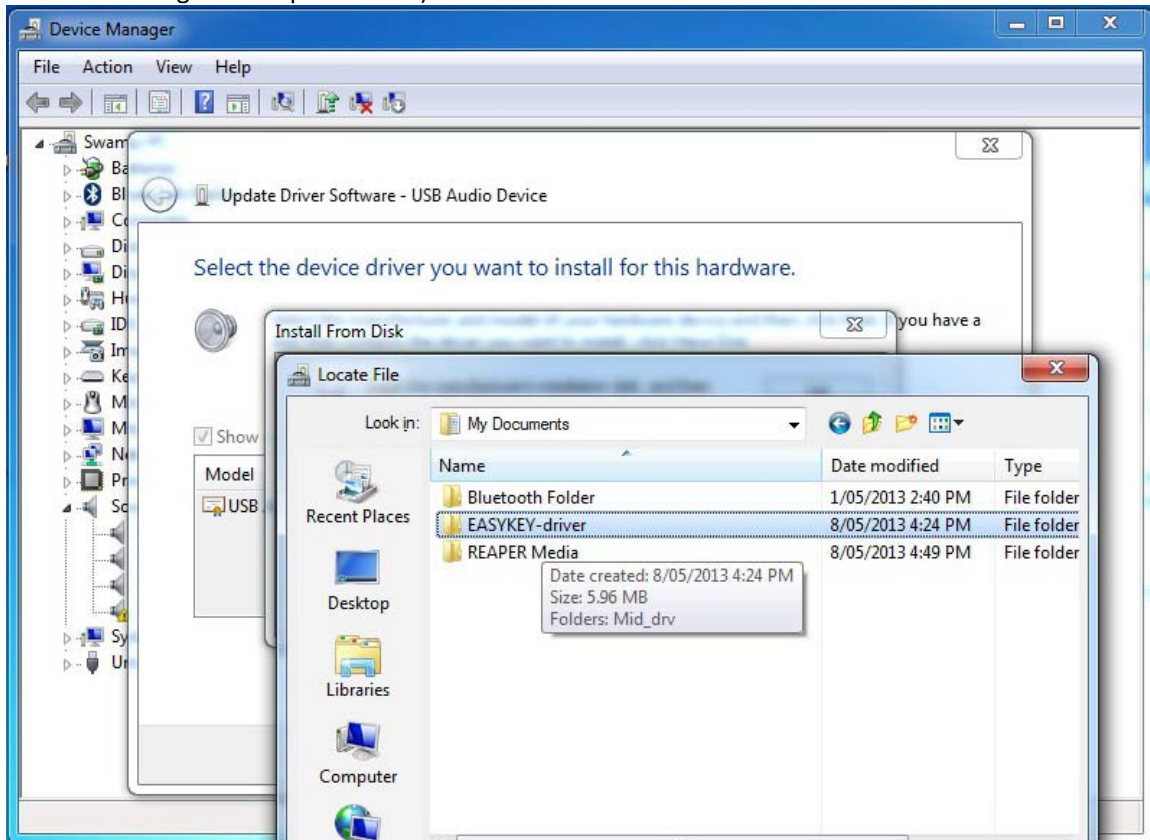
6. Click on "Have Disk" as shown in the picture below:



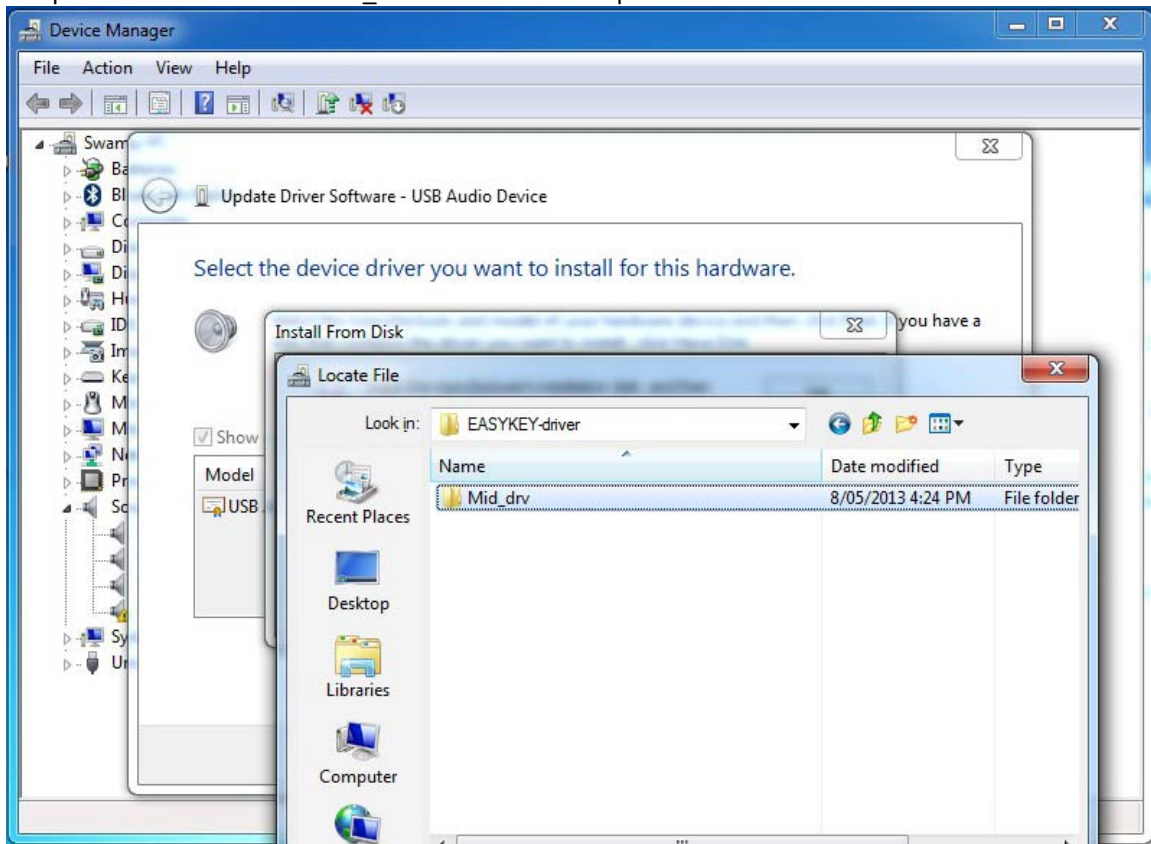
7. Click on "Browse" to manually find the driver files located on your PC as shown in the picture below:



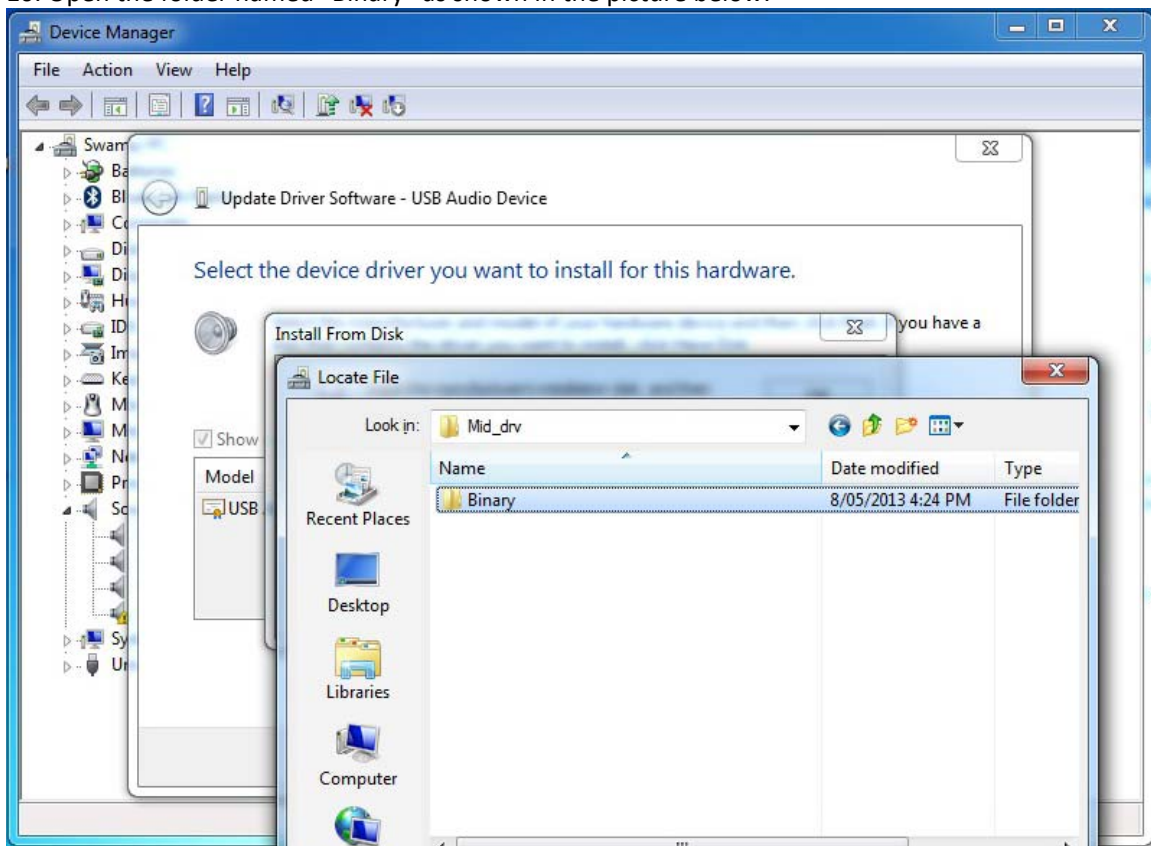
8. Open the parent folder for the driver, named "EASYKEY-driver" (the location of which you selected when extracting the compressed file)



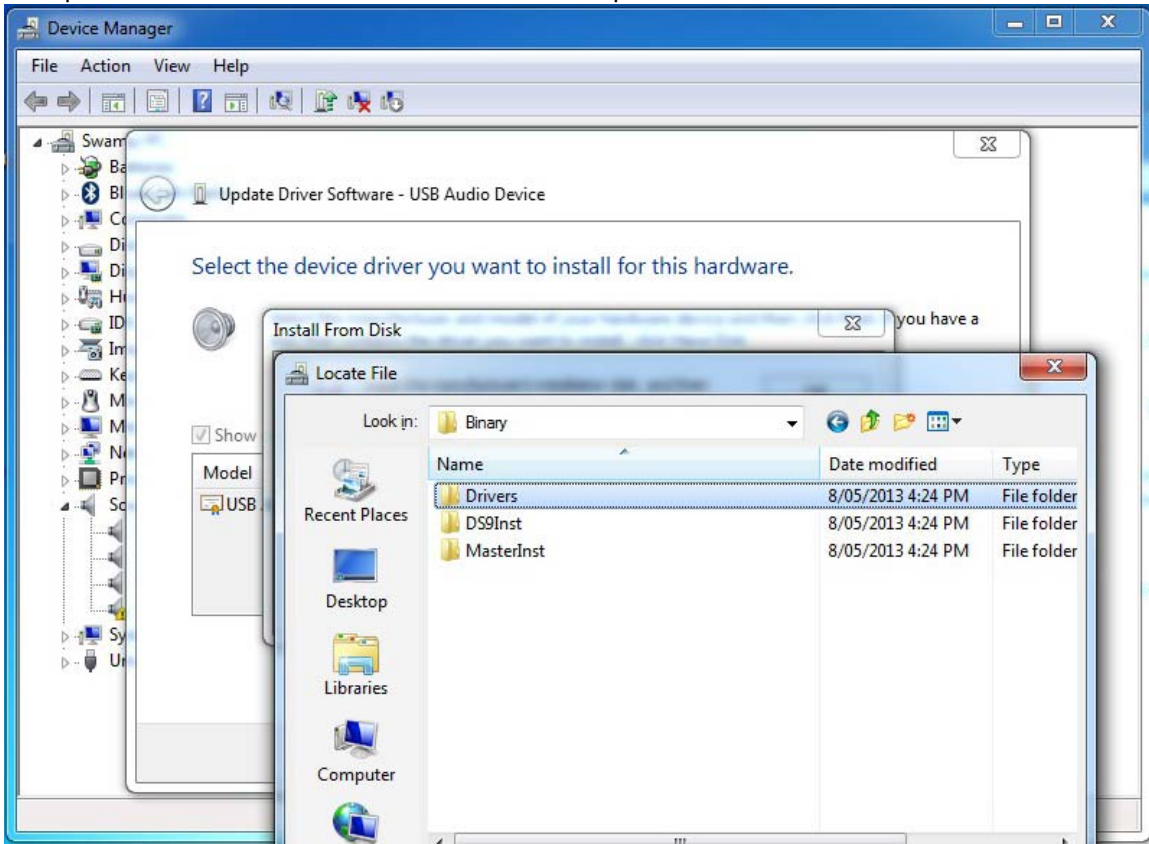
9. Open the folder named "Mid_drv" as shown in the picture below:



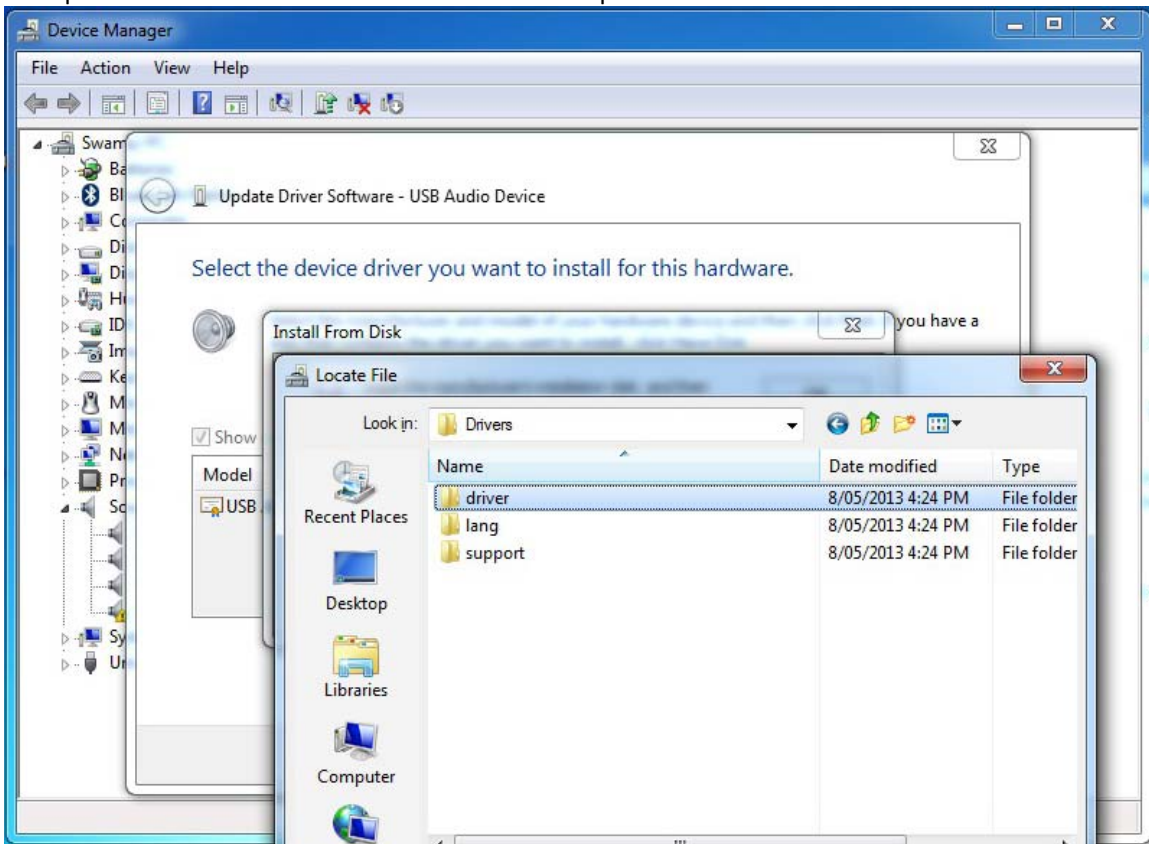
10. Open the folder named "Binary" as shown in the picture below:



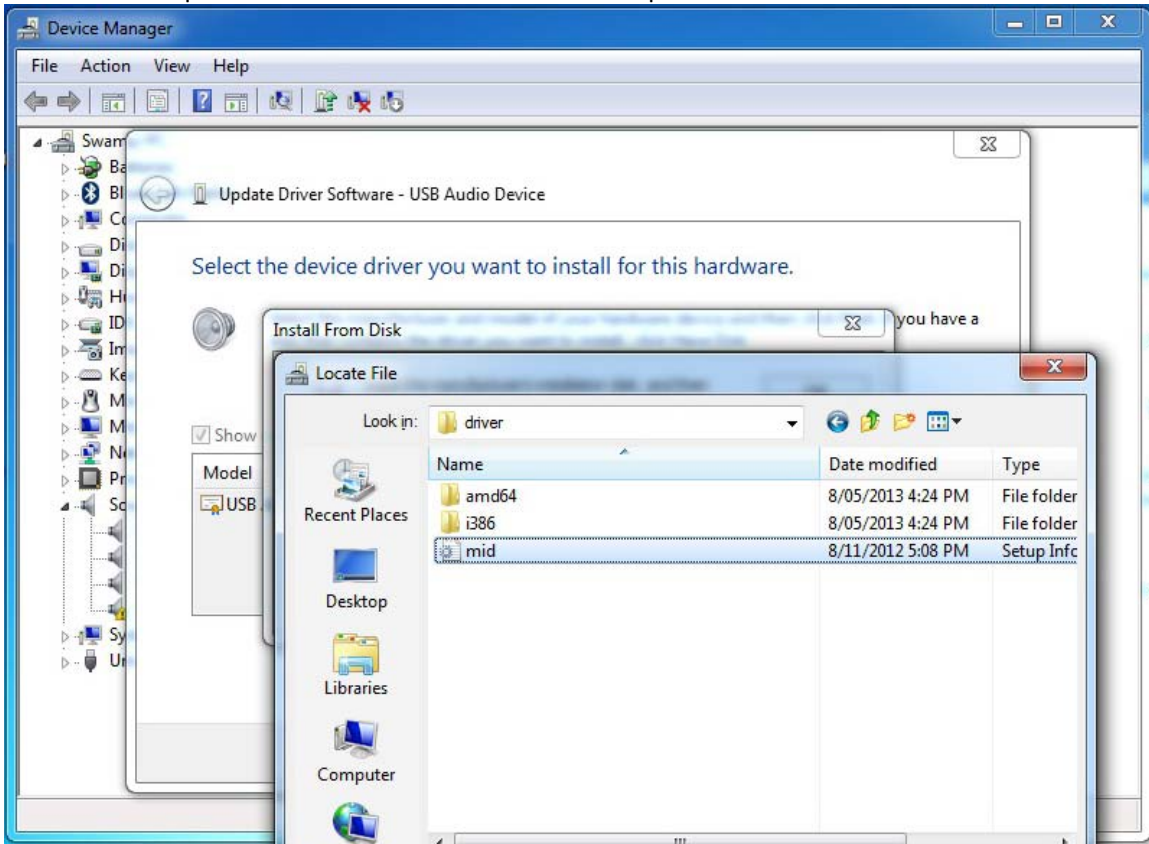
11. Open the folder named "Drivers" as shown in the picture below:



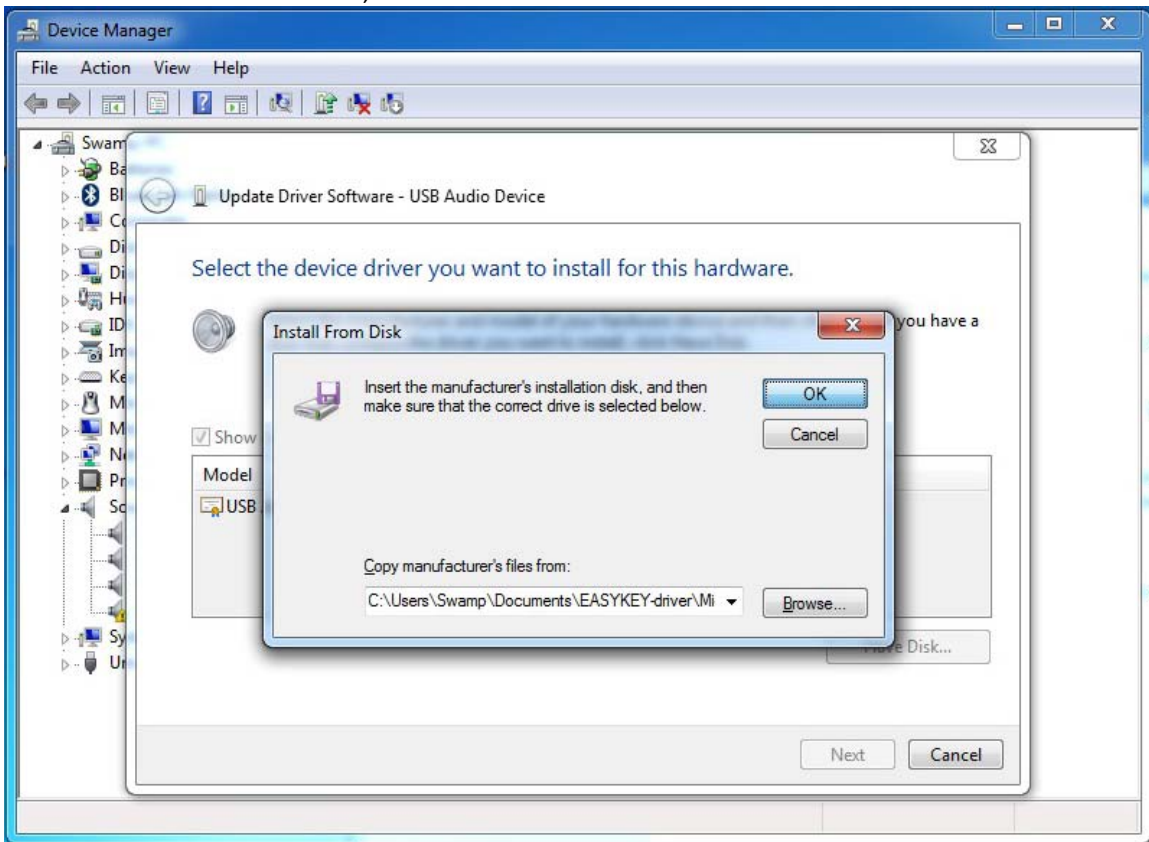
12. Open the folder named "driver" as shown in the picture below:



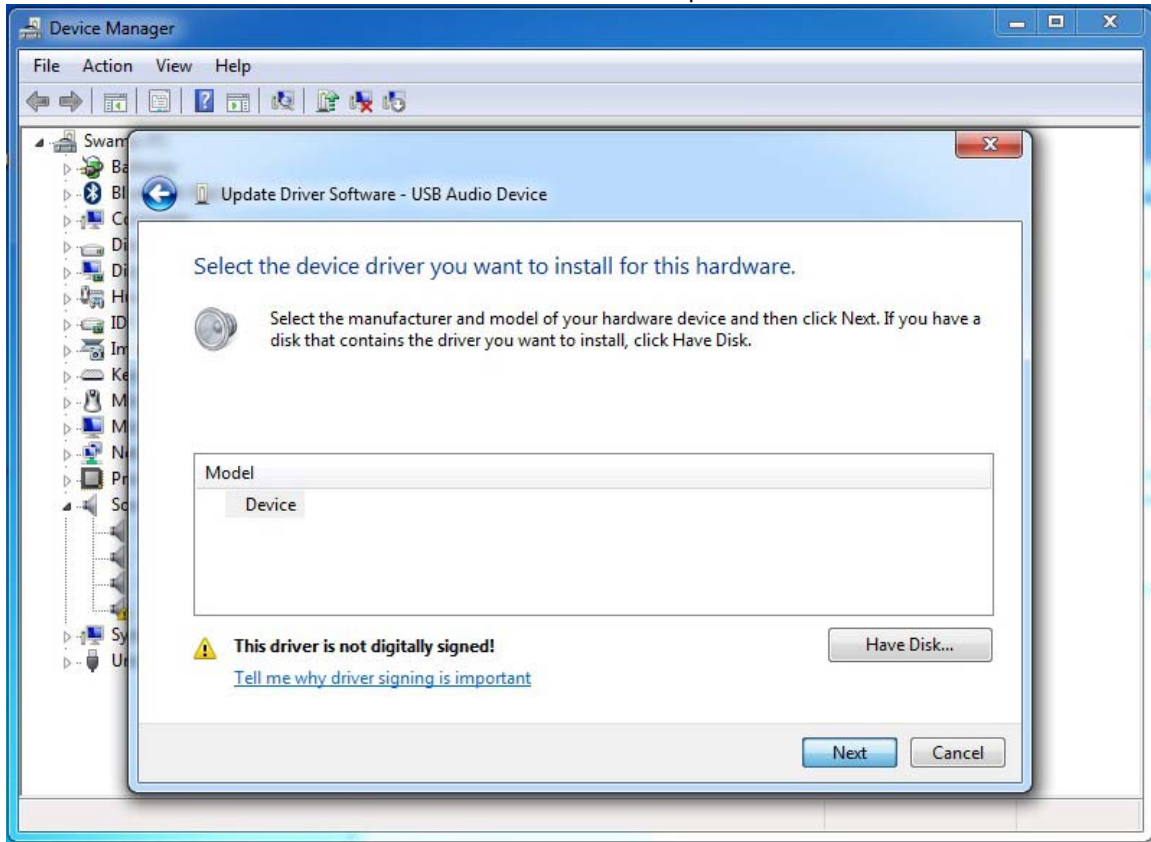
13. Select and open the file name "mid" as shown in the picture below:



14. Now that the file is selected, click "OK"

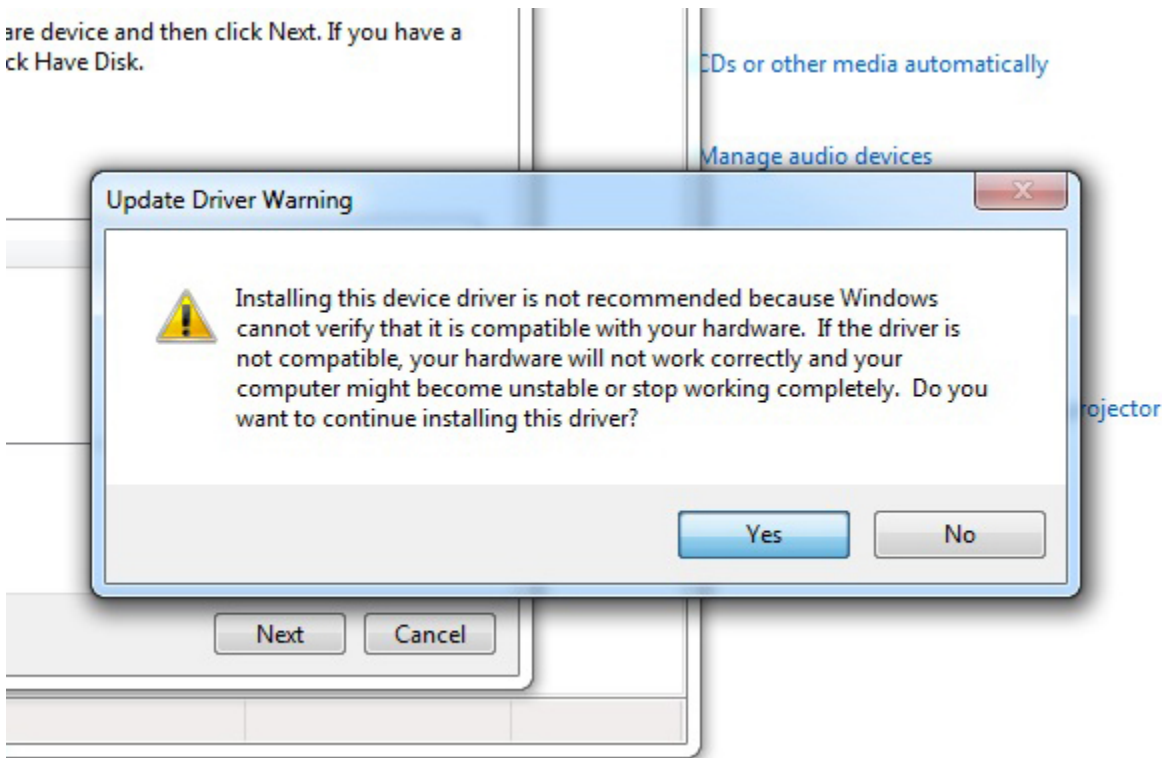


15. Left click Device and then left click Next as shown in the picture below:

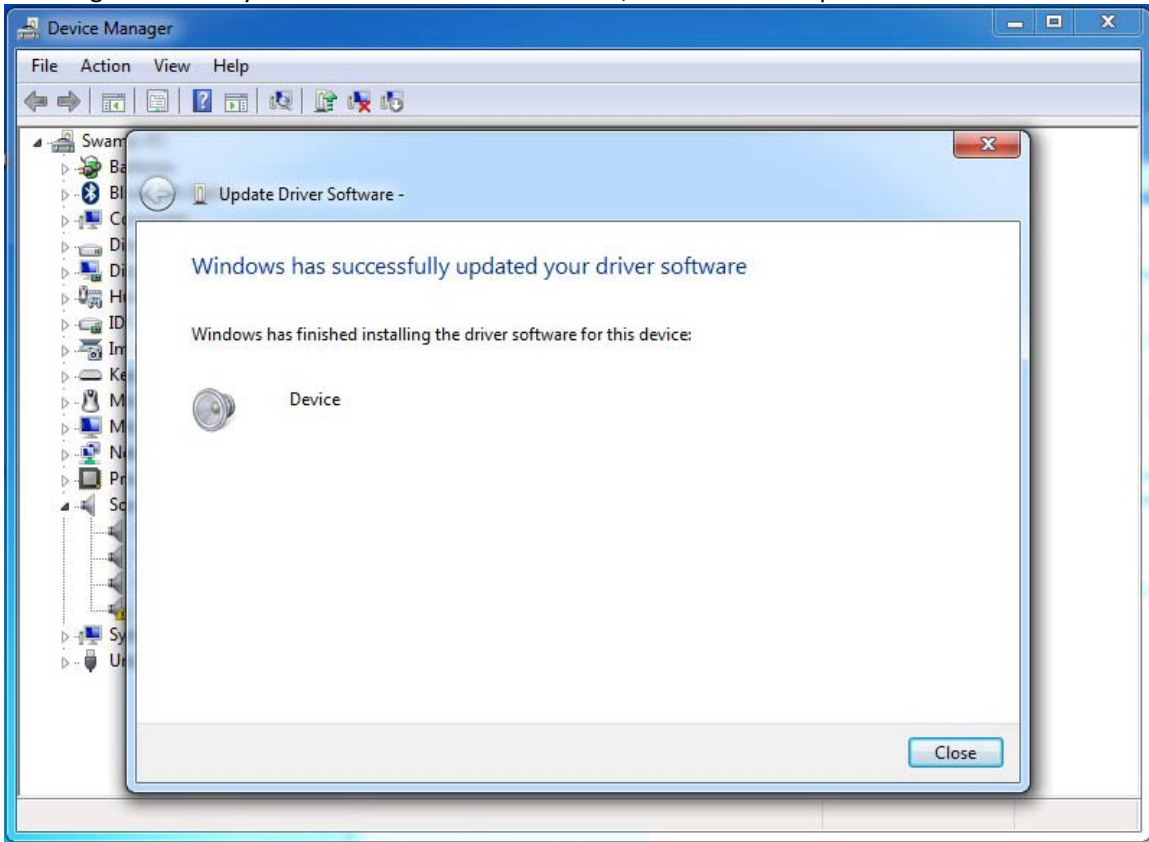


16. The following warning may be displayed. If it does, you can rest easy and just click YES:

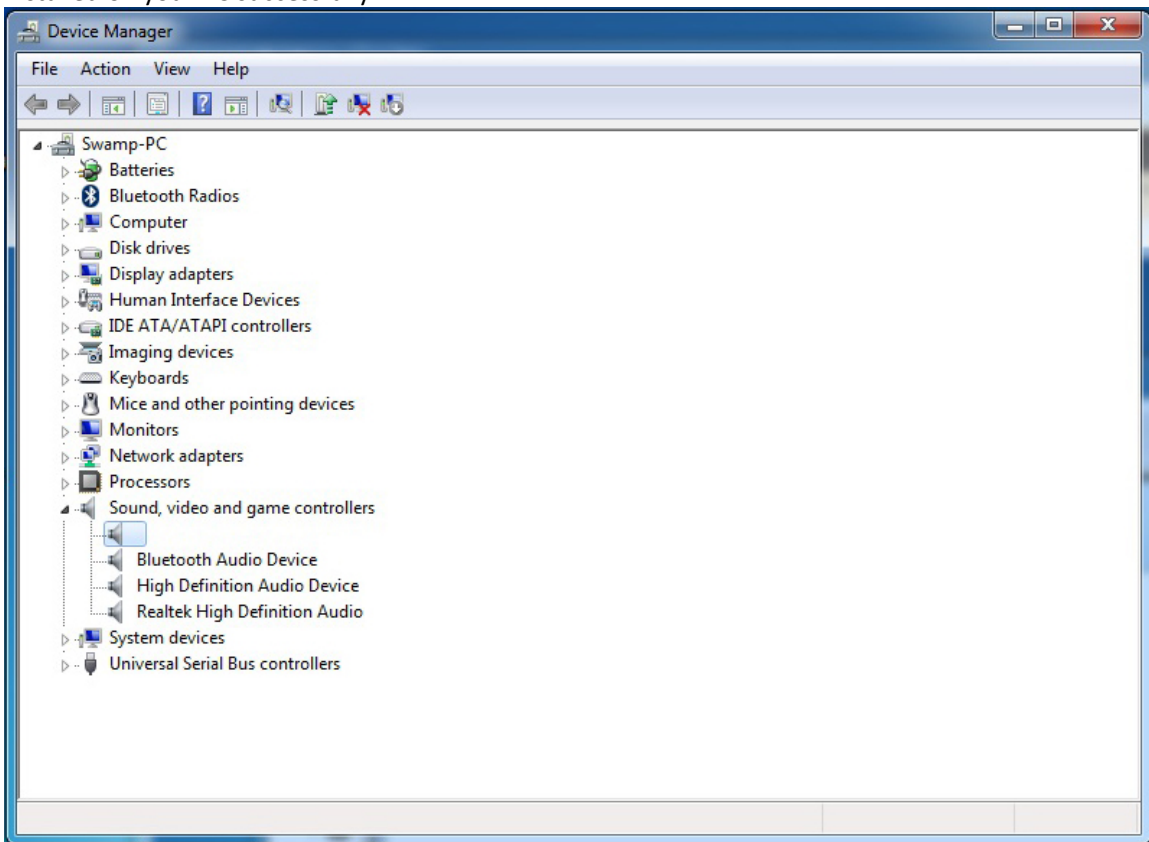
are device and then click Next. If you have a
ck Have Disk.



17. Congratulations! you have now installed the driver, as shown in the picture below.



18: Go back to "USB Audio Device" under Device Manager and you will now find it's showing as a sign of Speaker with no name next to it. If your driver is displayed like this it means the driver is installed on your PC successfully.



Thanks for your kind patience in following this driver installation guide.