

Saramonic

Full-Duplex Wireless Intercom Headset System
全双工无线对讲耳机系统

WiTalk System



Statement

Please read this manual carefully before using the products and strictly operate & store it in accordance with the instructions. Please save the manual for your future reference. If you need further assistance than the user manual, please consult your retailer for help or email us :
info@saramonic.com.

Introduction

WiTalk series is a full-duplex wireless intercom headset system that offers two-way communication at a range of up to 400m. WiTalk system is ideal for applications where teams need full use of their hands, such as filmmaking, sports events, production crew communication, etc. It mainly includes the following product:

WiTalk HUB, a mini base station with two operating channels, can work with eight Remote headsets simultaneously. Its 3.5mm headphone & microphone combo jack can be connected to the WiTalk LBH (monaural intercom headset), creating a nine-person talk net.

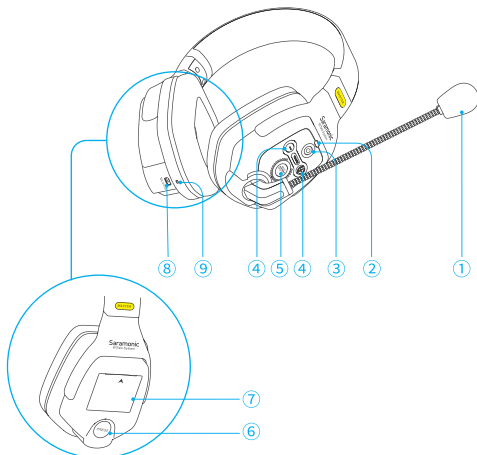
Both WiTalk DMH (dual-ear master headset) and WiTalk SMH (single-ear master headset) can be used with four Remote headsets, allowing up to 5 people to communicate simultaneously.

Both WiTalk DRH (dual-ear remote headset) and WiTalk SRH (single-ear remote headset) can be paired with any kind of master headset or base station.

WiTalk CB, a battery charger, can charge up to 10 batteries at the same time.

Product Structure

WiTalk DMH: Dual-Ear Master Headset



① Microphone

② Status Indicator

③ Power Button

Press and hold to power on or off.

④ Volume Control (+/- button)

Press "+" or "-" button to increase or decrease the volume.

⑤ Mute Button

Mode	Status Indicator
Mute	Blinking red
Not mute	Static blue

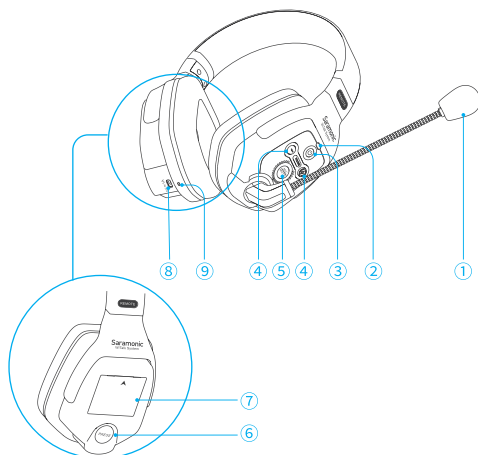
⑥ Release Button

⑦ Battery Compartment

⑧ USB-C Charging Port

⑨ Charging Indicator

WiTalk DRH: Dual-Ear Remote Headset



① Microphone

② Status Indicator

③ Power Button

Press and hold to power on or off.

④ Volume Control (+/- button)

Press "+" or "-" button to increase or decrease the volume.

⑤ Mute Button

Mode	Status Indicator
Mute	Blinking red
Not mute	Static blue

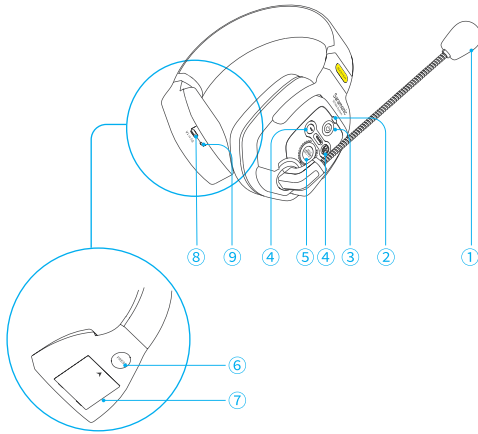
⑥ Release Button

⑦ Battery Compartment

⑧ USB-C Charging Port

⑨ Charging Indicator

WiTalk SMH: Single-Ear Master Headset



① Microphone

② Status Indicator

③ Power Button

Press and hold to power on or off.

④ Volume Control (+/- button)

Press "+" or "-" button to increase or decrease the volume.

⑤ Mute Button

Mode	Status Indicator
Mute	Blinking red
Not mute	Static blue

⑥ Release Button

⑦ Battery Compartment

⑧ USB-C Charging Port

⑨ Charging Indicator

① Microphone

② Status Indicator

③ Power Button

Press and hold to power on or off.

④ Volume Control (+/- button)

Press "+" or "-" button to increase or decrease the volume.

⑤ Mute Button

Mode	Status Indicator
Mute	Blinking red
Not mute	Static blue

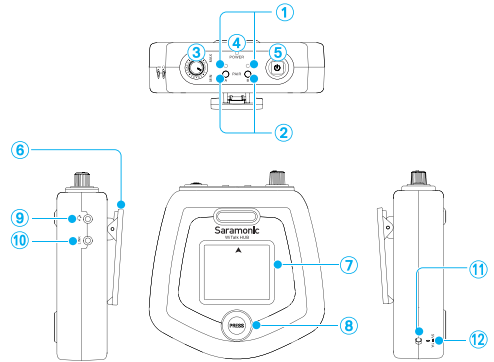
⑥ Release Button

⑦ Battery Compartment

⑧ USB-C Charging Port

⑨ Charging Indicator

WiTalk HUB: Mini Base Station



① Pairing Indicator

② Pair Buttons of Channel A and Channel B

③ Volume Control Knob

④ Power Indicator

⑤ Power Button

Press and hold to power on or off.

⑥ Belt Clip

⑦ Battery Compartment

⑧ Release Button

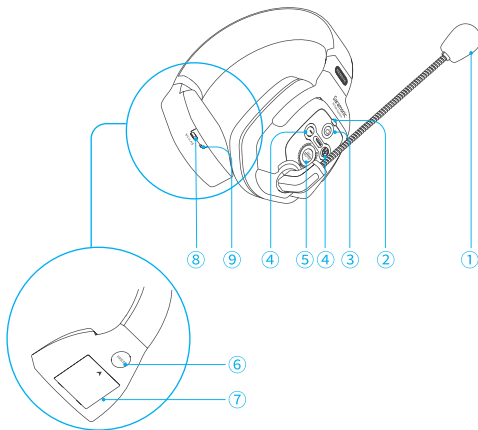
⑨ 3.5mm Headphone & Microphone Combo Jack

⑩ Link Jack

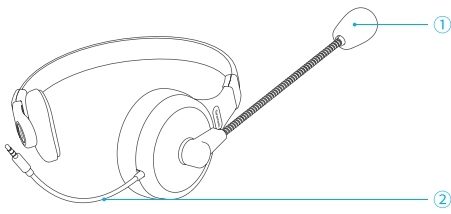
⑪ USB-C Charging Port

⑫ Charging Indicator

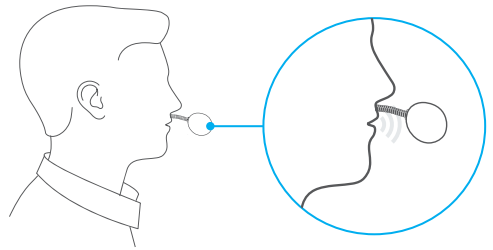
WiTalk SRH: Single-Ear Remote Headset



WiTalk LBH: Monaural Intercom Headset

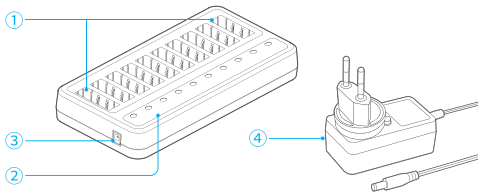


- ① Microphone
- ② Audio Connector
3.5mm TRRS cable



2. Adjust the boom and position the microphone capsule at about 2cm in front of your mouth for optimum audio.

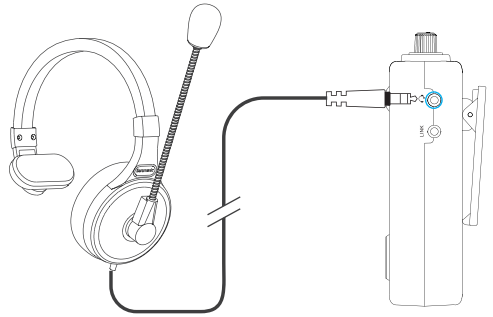
WiTalk CB: 10-Bay Battery Charger



- ① Battery Slots
- ② Charging Indicators
- ③ DC Jack
- ④ 12V/2.5A DC Adapter
(Including three types of detachable plug adapters:
Europlug, American plug, and Chinese plug.)

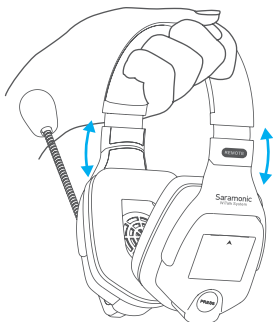
How to Use WiTalk LBH

Connect the headset to the  jack of WiTalk HUB



Operation Guide

How to Wear Witalk DMH/DRH/SMH/SRH/LBH



1. Put on the headset and adjust it to a comfortable size and position.

Headsets Pairing

Before leaving the factory, the WiTalk system is pre-paired. Therefore, the connection will be established once they are powered on. If they are disconnected, please follow the below steps:

- Step 1: Make sure that the Master headset and Remote headset(s) are powered off.
- Step 2: When the Master headset is in shutdown mode, press and hold its "+" button and power button simultaneously for about 3 seconds to enter pairing mode. The indicator will blink blue rapidly.
- Step 3: When the Remote headset is in shutdown mode, press and hold its "+" button and power button simultaneously for about 3 seconds to enter pairing mode. The indicator will blink blue rapidly. Do it for all Remote headsets in turn.
- Step 4: When the Master headset and the Remote headset(s) have entered the pairing mode, and the indicator of the Remote headset(s) turns to slowly blink blue, press the power button of the Master headset. They will be successfully paired within 10 seconds, and the indicators of both will turn to static blue.

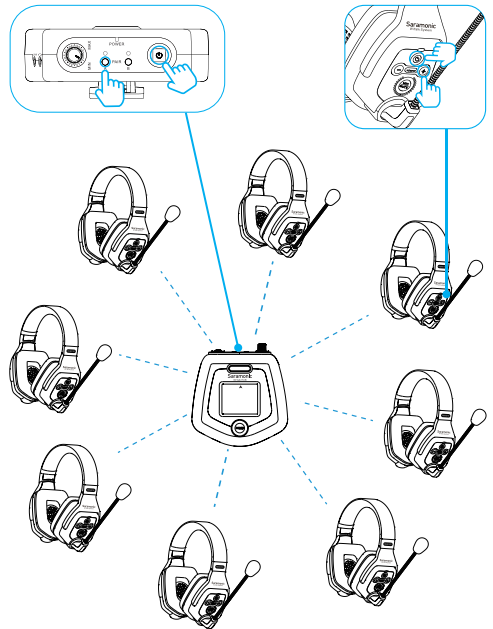
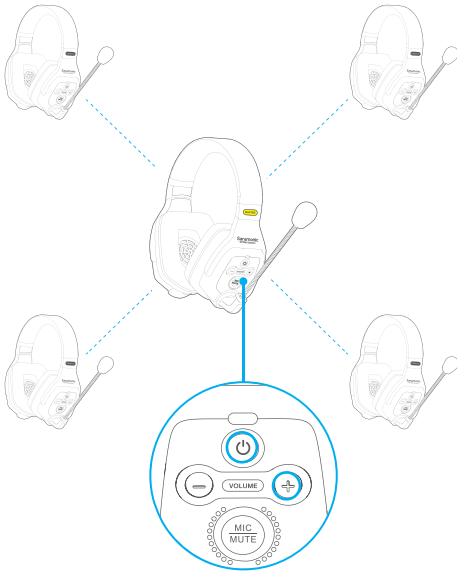
Note:

1. Each Master headset can have a maximum of four Remote headsets paired.
2. When the number of the Remote headset is up to 4, the Master headset has reached the maximum pairing number by default. The pairing will be successful without the fourth step.
3. If the Master headset couldn't enter the pairing mode, it will automatically turn on after its indicator blinks red rapidly for 5 seconds. This means that the Master headset has reached the maximum pairing number. If you want to re-enable the pairing mode, please clear the Master headset first.
4. The Master headset and Remote headset of the single-ear and dual-ear can be used for paired. The pairing method is the same as above.

Mode	Status Indicator
Unpaired	Blinking blue slowly
Pairing	Blinking blue quickly
Paired Successfully	Static blue

Mini Base Station Pairing

- Step 1: Make sure that the WiTalk HUB and the Remote headset are powered off.
- Step 2: When the WiTalk HUB is in shutdown mode, press and hold its pair button (A or B) and power button simultaneously for about 3 seconds. The indicator will blink blue rapidly, and then the corresponding channel (A or B) enters the pairing mode.
- Step 3: When the Remote headset is in shutdown mode, press and hold its "+" button and power button simultaneously for about 3 seconds to enter pairing mode. The indicator will blink blue rapidly. Do it for all Remote headsets in turn.
- Step 4: When the WiTalk HUB and the Remote headset(s) have entered the pairing mode, and the indicator of the Remote headset(s) turns to slowly blink blue, press the power button of the WiTalk HUB. They will be successfully paired within 10 seconds, and the indicators of both will turn to static blue.



Note: Each channel can have a maximum of 4 Remote headsets paired. Thus, the WiTalk HUB can work with up to 8 Remote headsets simultaneously. After channel A is paired, if necessary, repeat the above steps to pair channel B.

Mode	Status Indicator
Unpaired	Blinking blue slowly
Pairing	Blinking blue quickly
Paired Successfully	Static blue

Clearing the Master Headset

When pairing with a repaired or replaced unit, the Master headset needs to be cleared before a Remote headset can be paired. Follow the steps below to clear the Master headset:

Step 1: Make sure the Master headset is powered off.

Step 2: Press and hold the Master headset's power button and "-" button simultaneously for 10 seconds until its indicator blinks red and blue alternately. When the indicator turns off, the Master headset is cleared.

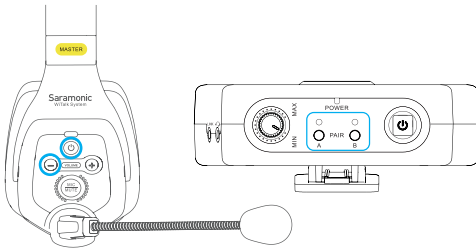
Clearing the WiTalk HUB

When pairing with a repaired or replaced unit, the WiTalk HUB needs to be cleared before a Remote headset can be paired. Follow the steps below to clear the WiTalk HUB:

Step 1: Make sure the WiTalk HUB is powered off.

Step 2: Press and hold the WiTalk HUB's pair button A and power button simultaneously for 10 seconds. After channel A's indicator blinks blue rapidly for 3 seconds, channel A is cleared and channel B still works normally.

Step 3: Press and hold the WiTalk HUB's pair button B and power button simultaneously for 10 seconds. After channel B's indicator blinks blue rapidly for 3 seconds, channel B is cleared and then the WiTalk HUB will automatically shut down.



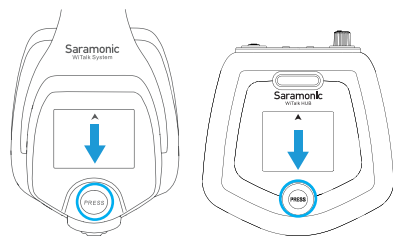
Battery Charging

Please recharge the device when battery is low.

1. Charge the battery via the charger.

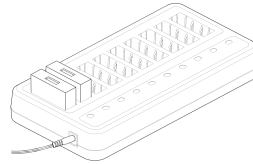
① Press the release button to remove the battery.

Mode	Status Indicator
Low Battery	Static red



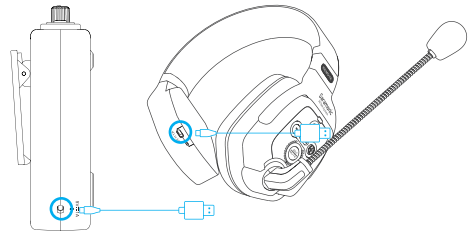
② Insert the battery and make sure the contacts are properly aligned.

Mode	Charging Indicator (Charger)
Charging	Static red
Fully Charged	Static blue



2. Charge the battery via a USB-C charging cable:

Mode	Charging Indicator (Headset)
Charging	Static red
Fully Charged	Static blue

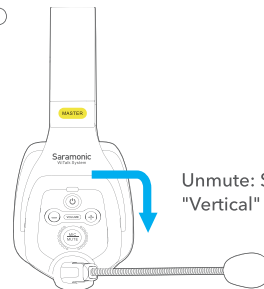


How to Mute Witalk DMH/DRH/SMH/SRH/LBH

Boom can swivel over the top 270 degrees. Thus, headset can be worn on both sides.

You can mute/ unmute the microphone in the following two ways:

①

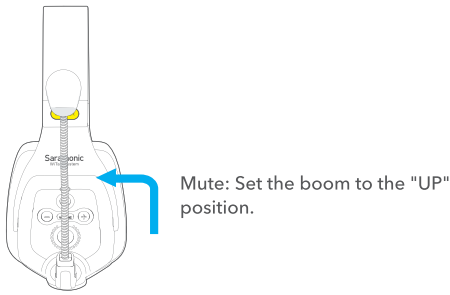


Unmute: Set the boom to the "Vertical" position.

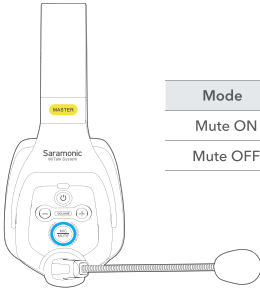
Specifications

Dual-Ear Master Headset (WiTalk DMH)

Duplex mode	Full-Duplex (FDX)
Modulation	GFSK
Carrier frequencies	1787MHz-1928MHz
Microphone type	Condenser microphone
Operating range	Up to 1312ft (400m) without obstacles
Frequency response	300Hz-5KHz
RF output power	<24dBm
Power consumption	<0.5W
SNR	65dB and more
Distortion	<1%
Power requirements	Li-ion Battery 3.7V/1200mAh or USB-C DC 5V
Battery life	Approx. 10 hours (with 2 Remotes), 5 hours (with 4 Remotes)
Weight	Approx. 360g (12.7oz)
Dimensions	175.1x203.1x85.8mm
Operating temperature	-10°C to 50°C
Storage temperature	-20°C to +55°C



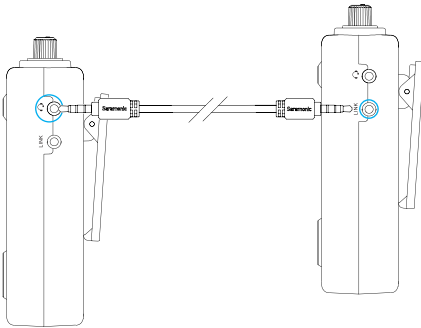
- ② Press the MIC/MUTE button to mute or unmute the microphone.



Mode	Status Indicator
Mute ON	Blinking red
Mute OFF	Static blue

Expanding the System

The system is expandable by adding more WiTalk HUB: Use a 3.5mm TRRS to TRRS adapter cable (sold separately) to connect one WiTalk HUB's link jack to another WiTalk HUB's headphone & microphone combo jack, doubling capacity to 16 full-duplex headsets.



Dual-Ear Remote Headset (WiTalk DRH)

Duplex mode	Full-Duplex (FDX)
Modulation	GFSK
Carrier frequencies	1787MHz-1928MHz
Microphone type	Condenser microphone
Operating range	Up to 1312ft (400m) without obstacles
Frequency response	300Hz-5KHz
RF output power	<24dBm
Power consumption	<0.5W
SNR	65dB and more
Distortion	<1%
Power requirements	Li-ion Battery 3.7V/1200mAh or USB-C DC 5V
Battery life	Approx. 18 hours
Weight	Approx. 360g (12.7oz)
Dimensions	175.1x203.1x85.8mm
Operating temperature	-10°C to 50°C
Storage temperature	-20°C to +55°C

Single-Ear Master Headset (WiTalk SMH)

Duplex mode	Full-Duplex (FDX)
Modulation	GFSK
Carrier frequencies	1787MHz-1928MHz
Microphone type	Condenser microphone
Operating range	Up to 1312ft (400m) without obstacles
Frequency response	300Hz-5kHz
RF output power	<24dBm
Power consumption	<0.5W
SNR	65dB and more
Distortion	<1%
Power requirements	Li-ion Battery 3.7V/1200mAh or USB-C DC 5V
Battery life	Approx. 10 hours (with 2 Remotes), 5 hours (with 4 Remotes)
Weight	Approx. 360g (12.7oz)
Dimensions	175.1x203.1x85.8mm
Operating temperature	-10°C to 50°C
Storage temperature	-20°C to +55°C

Single-Ear Remote Headset (WiTalk SRH)

Duplex mode	Full-Duplex (FDX)
Modulation	GFSK
Carrier frequencies	1787MHz-1928MHz
Microphone type	Condenser microphone
Operating range	Up to 1312ft (400m) without obstacles
Frequency response	300Hz-5kHz
RF output power	<24dBm
Power consumption	<0.5W
SNR	65dB and more
Distortion	<1%
Power requirements	Li-ion Battery 3.7V/1200mAh or USB-C DC 5V
Battery life	Approx. 18 hours
Weight	Approx. 360g (12.7oz)
Dimensions	175.1x203.1x85.8mm
Operating temperature	-10°C to 50°C
Storage temperature	-20°C to +55°C

Mini Base Station (WiTalk HUB)

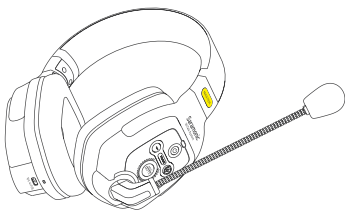
Duplex mode	Full-Duplex (FDX)
Modulation	GFSK
Carrier frequencies	1787MHz-1928MHz
Operating range	Up to 1312ft (400m) without obstacles
Frequency response	300Hz-5kHz
RF output power	<24dBm
Power consumption	<0.5W
SNR	≥65dB
Distortion	<1%
Power requirements	3.7V/1200mAh Li-ion Battery or USB-C DC 5V
Battery life	Approx. 2.5 hours (with 8 Remotes), Approx. 5 hours (with 4 Remotes)
Weight	Approx. 180g (6.35oz)
Dimensions	127.6x119.4x46.5mm
Operating temperature	-10°C to 50°C
Storage temperature	-20°C to 55°C

Standards for Radio Frequency Band

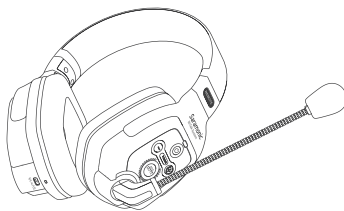
Product Versions	Frequency Range	Regions Available
Standard Version	1880-1900MHz	Europe: The United Kingdom; Hong Kong; South Africa; Malaysia; Australia; New Zealand;
American Version	1920-1930MHz	United States; Canada; Mexico
Japanese Version	1893-1906MHz	Japan
Taiwanese Version	1880-1895MHz	Taiwan
Brazilian Version	1910-1920MHz	Brazil

For the latest frequency band and the more countries, please refer to our official website: www.saramonic.com

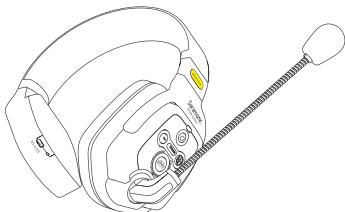
Packing List



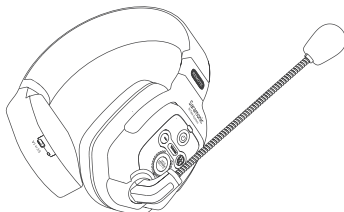
WiTalk DMH Dual-Ear Master Headset



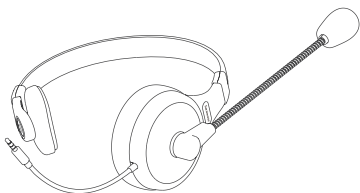
WiTalk DRH Dual-Ear Remote Headset



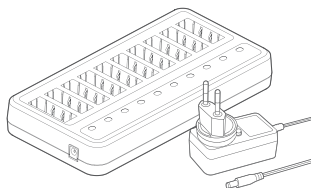
WiTalk SMH Single-Ear Master Headset



WiTalk SRH Single-Ear Remote Headset



WiTalk LBH Monaural Intercom Headset



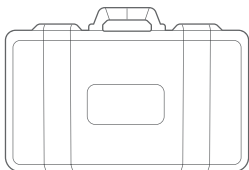
WiTalk CB Battery Charger



WiTalk HUB Mini Base Station



WiTalk BP Rechargeable Battery



WiTalk Carrying Case (S/M/L)

WiTalk WT2D

1* WiTalk DMH Headset
1* WiTalk DRH Headset
2* WiTalk BP Battery
2* USB-C Charging Cable
1* WiTalk Carrying Case (S)

WiTalk WT2S

1* WiTalk SMH Headset
1* WiTalk SRH Headset
2* WiTalk BP Battery
2* USB-C Charging Cable
1* WiTalk Carrying Case (S)

WiTalk WT3D

1* WiTalk DMH Headset
2* WiTalk DRH Headset
3* WiTalk BP Battery
3* USB-C Charging Cable
1* WiTalk Carrying Case (S)

WiTalk WT3S

1* WiTalk SMH Headset
2* WiTalk SRH Headset
3* WiTalk BP Battery
3* USB-C Charging Cable
1* WiTalk Carrying Case (S)

WiTalk WT4D

1* WiTalk DMH Headset
3* WiTalk DRH Headset
4* WiTalk BP Battery
4* USB-C Charging Cable
1* WiTalk Carrying Case (S)

WiTalk WT4S

1* WiTalk SMH Headset
3* WiTalk SRH Headset
4* WiTalk BP Battery
4* USB-C Charging Cable
1* WiTalk Carrying Case (S)

WiTalk WT5D

1* WiTalk DMH Headset
4* WiTalk DRH Headset
5* WiTalk BP Battery
1* WiTalk CB Battery Charger
1* WiTalk Carrying Case (M)

WiTalk WT5S

1* WiTalk SMH Headset
4* WiTalk SRH Headset
5* WiTalk BP Battery
1* WiTalk CB Battery Charger
1* WiTalk Carrying Case (M)

WiTalk WT6D

1* WiTalk HUB Base Station
5* WiTalk DRH Headset
6* WiTalk BP Battery
1* WiTalk CB Battery Charger
1* WiTalk LBH Headset
1* WiTalk Carrying Case (M)

WiTalk WT6S

1* WiTalk HUB Base Station
5* WiTalk SRH Headset
6* WiTalk BP Battery
1* WiTalk CB Battery Charger
1* WiTalk LBH Headset
1* WiTalk Carrying Case (M)

WiTalk WT7D

1* WiTalk HUB Base Station
6* WiTalk DRH Headset
7* WiTalk BP Battery
1* WiTalk CB Battery Charger
1* WiTalk LBH Headset
1* WiTalk Carrying Case (L)

WiTalk WT7S

1* WiTalk HUB Base Station
6* WiTalk SRH Headset
7* WiTalk BP Battery
1* WiTalk CB Battery Charger
1* WiTalk LBH Headset
1* WiTalk Carrying Case (L)

WiTalk WT8D

1* WiTalk HUB Base Station
7* WiTalk DRH Headset
8* WiTalk BP Battery
1* WiTalk CB Battery Charger
1* WiTalk LBH Headset
1* WiTalk Carrying Case (L)

WiTalk WT8S

1* WiTalk HUB Base Station
7* WiTalk SRH Headset
8* WiTalk BP Battery
1* WiTalk CB Battery Charger
1* WiTalk LBH Headset
1* WiTalk Carrying Case (L)

WiTalk WT9D

1* WiTalk HUB Base Station
8* WiTalk DRH Headset
9* WiTalk BP Battery
1* WiTalk CB Battery Charger
1* WiTalk LBH Headset
1* WiTalk Carrying Case (L)

WiTalk WT9S

1* WiTalk HUB Base Station
8* WiTalk SRH Headset
9* WiTalk BP Battery
1* WiTalk CB Battery Charger
1* WiTalk LBH Headset
1* WiTalk Carrying Case (L)

声明

请在使用前仔细阅读本手册，并严格按照说明进行操作和存储。请保存以供将来参考。如果用户手册不能帮助您解决某些问题，请向零售商寻求帮助或给我们发送电子邮件：info@saramonic.com。

概述

WiTalk 系列产品是一款全双工无线对讲机系统，无线传输距离高达 400 米。产品使用时无需一直进行按钮操作，真正的做到解放双手，想说就说。非常适用于电影拍摄、跑马场、赛车场以及其他各种赛事现场等。本系统主要包含以下几种产品：

腰包主机 WiTalk HUB 具有 A、B 两个通道，最多可同时与八台从机连接使用，其 3.5mm 耳麦插孔可接入单耳耳麦机 WiTalk LBH，实现 9 人同时进行对讲通信。

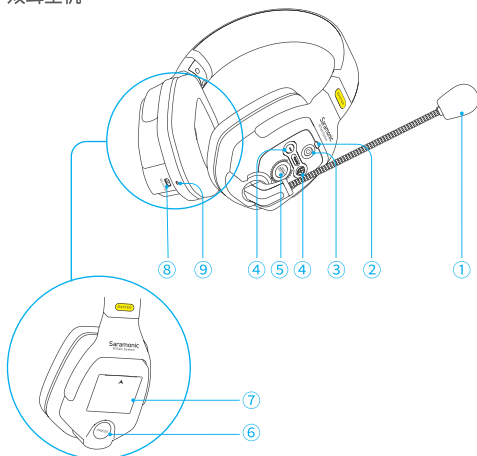
双耳主机 WiTalk DMH 或单耳主机 WiTalk SMH 均可最多同时与四台从机连接使用，实现 5 人同时进行对讲通信。

双耳从机 WiTalk DRH 或单耳从机 WiTalk SRH 均可搭配任意一种主机配对使用。

电池充电槽 WiTalk CB 一次最多可以同时给 10 个电池进行充电。

产品结构

双耳主机



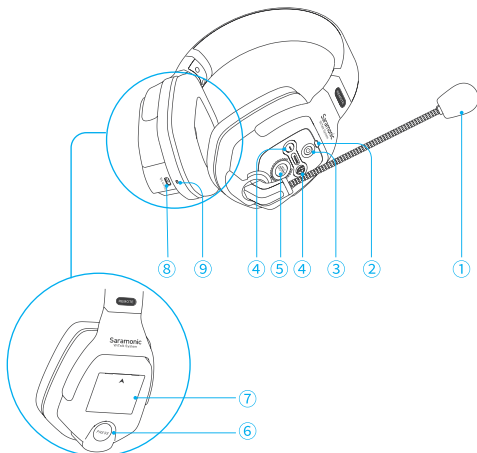
- ① 麦克风
- ② 状态指示灯
- ③ 电源键
长按电源键开启 / 关闭
- ④ 音量 +/- 键
短按“-”键，减小音量；
短按“+”键，增加音量。

⑤ 静音键

模式	状态指示灯
静音开启	红灯闪烁
静音关闭	蓝灯常亮

- ⑥ 电池释放键
- ⑦ 电池仓
- ⑧ USB-C 充电接口
- ⑨ 充电指示灯

双耳从机



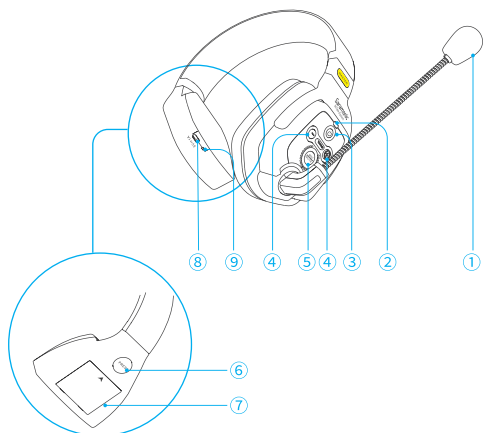
- ① 麦克风
- ② 状态指示灯
- ③ 电源键
长按电源键开启 / 关闭
- ④ 音量 +/- 键
短按“-”键，减小音量；
短按“+”键，增加音量。

⑤ 静音键

模式	状态指示灯
静音开启	红灯闪烁
静音关闭	蓝灯常亮

- ⑥ 电池释放键
- ⑦ 电池仓
- ⑧ USB-C 充电接口
- ⑨ 充电指示灯

单耳主机



- ① 麦克风
- ② 状态指示灯
- ③ 电源键
长按电源键开启 / 关闭
- ④ 音量 +/- 键
短按“-”键，减小音量；
短按“+”键，增加音量。

⑤ 静音键

模式	状态指示灯
静音开启	红灯闪烁
静音关闭	蓝灯常亮

- ⑥ 电池释放键
- ⑦ 电池仓
- ⑧ USB-C 充电接口
- ⑨ 充电指示灯

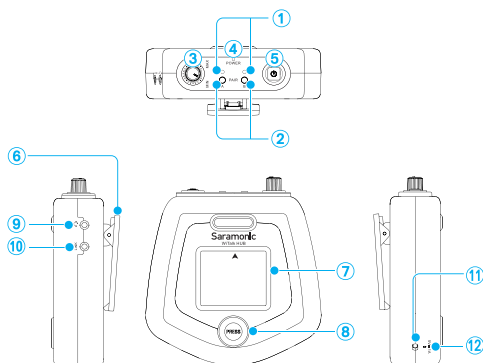
- ① 麦克风
- ② 状态指示灯
- ③ 电源键
长按电源键开启 / 关闭
- ④ 音量 +/- 键
短按“-”键，减小音量；
短按“+”键，增加音量。

⑤ 静音键

模式	状态指示灯
静音开启	红灯闪烁
静音关闭	蓝灯常亮

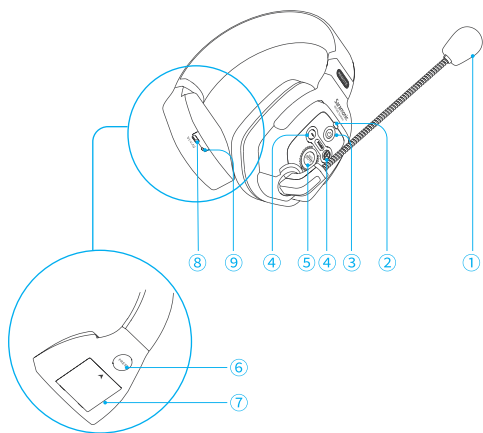
- ⑥ 电池释放键
- ⑦ 电池仓
- ⑧ USB-C 充电接口
- ⑨ 充电指示灯

腰包主机

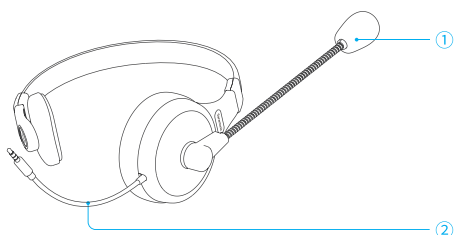


- ① 对码指示灯
- ② A/B 通道对码键
- ③ 音量调节旋钮
- ④ 电源指示灯
- ⑤ 电源键
长按电源键开启 / 关闭
- ⑥ 背夹
- ⑦ 电池仓
- ⑧ 电池释放键
- ⑨ 3.5mm 耳麦孔
- ⑩ Link 转接孔
- ⑪ USB-C 充电孔
- ⑫ 充电指示灯

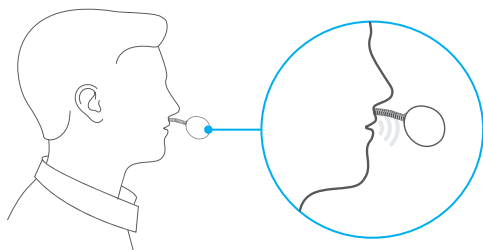
单耳从机



单耳耳机



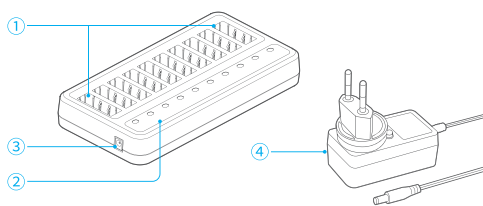
- ① 麦克风
- ② 音频接口
3.5mm TRRS 插头



2. 调整麦克风角度，并将咪头置于嘴前约 2cm 处，以获得最佳音频效果。

备注：Witalk DMH/DRH/SMH/SRH/LBH 耳机佩戴方式如上。

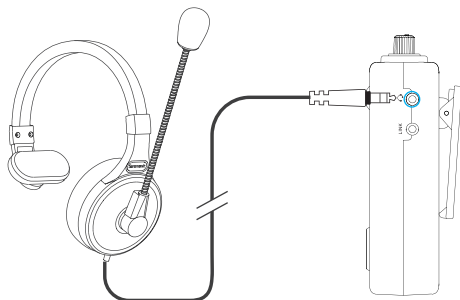
十槽充电座



- ① 电池充电槽
- ② 充电指示灯
- ③ DC 插孔
- ④ 12V/2.5A DC 适配器（含欧规、美规、大陆三种插头）

耳机使用方式

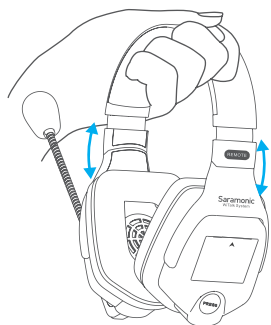
将耳机接入  插孔



操作指南

耳机佩戴

1. 戴上耳机，如图所示调整至舒适位置。



耳机配对

套装出厂前已配对成功。因此，产品开机之后会自动联机。若无成功连接，

请进行如下配对操作：

第一步：确保主机和从机处于关机状态；

第二步：主机在关机状态下，同时长按“音量+”和“电源”按键，约3秒后，待主机指示灯呈蓝灯快闪后松手，此时主机进入对码状态；

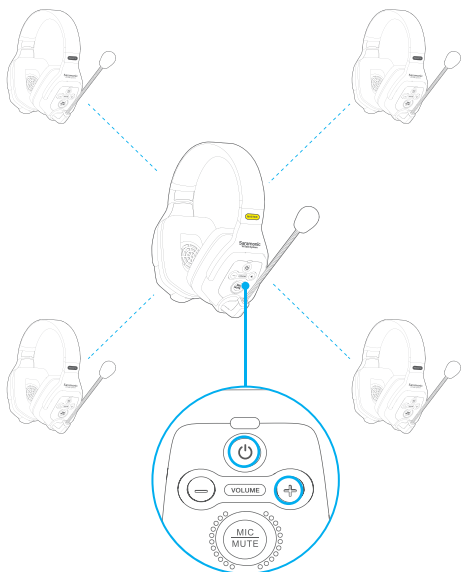
第三步：从机(1)在关机状态下，同时长按“音量+”和“电源”按键，约3秒后，待从机指示灯呈蓝灯快闪后松手，此时从机(1)进入对码状态。从机(2/3/4)依次进行此操作，使所有从机都进入对码状态；

第四步：主/从机都进入对码状态后（此时所有从机指示灯应由蓝灯快闪变为蓝灯慢闪），短按一次主机“电源”按键，耳机会在10秒内配对，指示灯变为蓝灯常亮，配对成功；

注意：

1. 请根据实际从机使用数量，进行对码操作，最多可同时连接四台从机。
2. 当从机数量为4套时，主机默认已达到最大配对数量，此时无需第四步操作，会直接配对成功。
3. 当主机进行对码操作，无法进入对码状态（红灯快闪5秒后正常开机），则说明主机已经达到最大配对数量，如仍要配对，需要先对主机进行清码动作，然后再进行重新配对。
4. 单/双耳，主/从机之间均可以互相对码使用，对码方式均相同。

模式	状态指示灯
未联机	蓝灯慢闪
对码中	蓝灯快闪
联机成功	蓝灯常亮



腰机配对

第一步：确保腰包和从机处于关机状态；

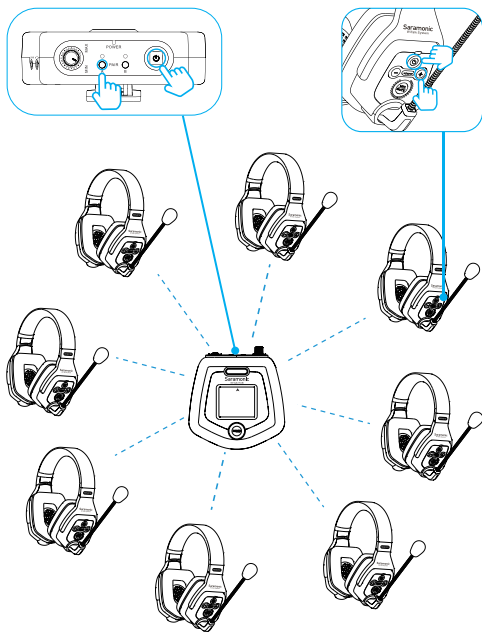
第二步：腰包主机在关机状态下，同时长按腰包主机“对码键”（A或B）和“电源”键，约3秒后，待指示灯呈蓝灯快闪后松手，此时相应的通道进入对码状态；

第三步：从机(1)在关机状态下，同时长按“音量+”和“电源”按键，约3秒后，待从机指示灯呈蓝灯快闪后松手，此时从机(1)进入对码状态。从机(2/3/4)依次进行此操作，使所有从机都进入对码状态；

第四步：主/从机都进入对码状态后（此时所有从机指示灯应由蓝灯快闪变为蓝灯慢闪），短按一次腰包主机“电源”按键，主/从机会在10秒内配对，指示灯变为蓝灯常亮，配对成功；

注意：请根据实际从机使用数量，进行对码操作，最多可同时连接八台从机（单个通道最多可连接4台从机）。A通道完成对码后，B通道需要重复以上步骤进行对码。

模式	状态指示灯
未联机	蓝灯慢闪
对码中	蓝灯快闪
联机成功	蓝灯常亮

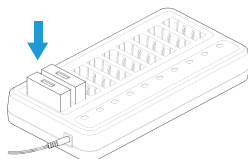


耳机主机清码功能

在设备进行重新配对前，请先对主机进行清码操作，步骤如下：

第一步：确保主机已关机。

第二步：同时长按主机“-”键和“电源”键，约10秒后，待主机指示灯呈红蓝灯交替闪烁，此时主机正在清码（清除对码），之后主机指示灯会熄灭，此时清码操作完成。



2. 使用 USB-C 充电线给电池充电。

模式	耳机充电指示灯
充电中	红灯常亮
充满电	蓝灯常亮

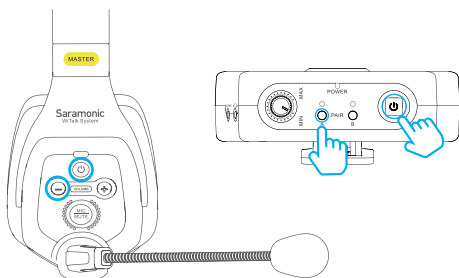
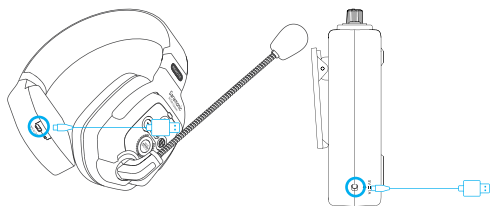
腰包主机清码功能

在设备进行重新配对前，请先对腰包主机进行清码操作，步骤如下：

第一步：确保腰包主机已关机。

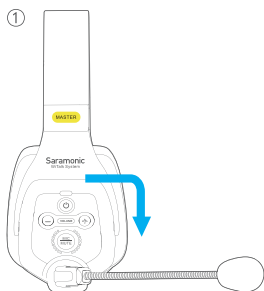
第二步：同时长按腰包主机“对码键”A和“电源”键10秒，A通道指示灯呈蓝灯快闪3秒后A通道清码完成，B通道正常工作。

第三步：同时长按腰包主机“对码键”B和“电源”键10秒，B通道指示灯呈蓝灯快闪3秒后B通道清码完成，产品会自动关机。

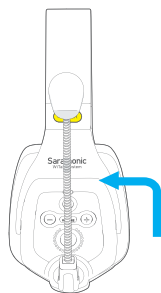


静音功能

麦克风动臂可旋转 270°，因此，耳机两侧均可佩戴。可通过以下两种方式进入 / 退出静音模式：



取消静音：将动臂旋转到与耳机垂直的位置



静音：将动臂旋转到向上的位置

备注：Witalk DMH/DRH/SMH/SRH/LBH 静音方式如上。

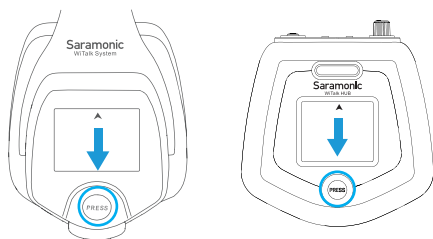
电池充电

若电池进入低电量状态，请及时进行充电：

1. 使用充电座给电池充电

① 按下电池释放键，取出电池。

模式	状态指示灯
低电量	红灯常亮



② 根据触点位置，将电池插入充电槽。

模式	充电座充电指示灯
充电中	红灯常亮
充满电	蓝灯常亮

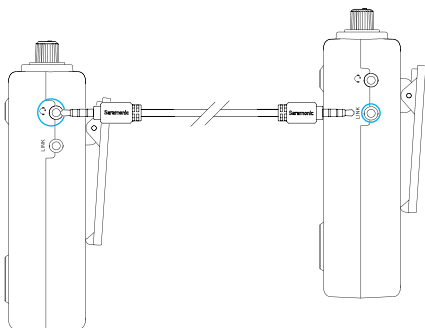
②. 短按静音键进入静音模式 / 取消静音



模式	状态指示灯
静音开启	红灯闪烁
静音关闭	蓝灯常亮

系统扩展

该系统可通过连接更多的 WiTalk HUB 腰包主机进行扩展: 使用 3.5mm TRRS 转 TRRS 转接线 (另售) 连接一个腰包的 Link 孔和另一个腰包的耳麦孔, 可以扩展为 1 拖 16 使用。



参数

双耳主机 (WiTalk DMH)

双工模式	全双工模式
调制方式	高斯频移键控
载波频率	1787MHz-1928MHz
麦克风类型	电容式麦克风
操作距离	高达 400 米 (无障碍)
频响范围	300Hz-5KHz
射频输出功率	<24dBm
功耗	<0.5W
信噪比	≥ 65dB
失真	<1%
供电方式	3.7V/1200mAh 锂电池 或 USB-C 直流电 5V
续航时间	约 10 小时 (一拖二) 约 5 小时 (一拖四)
重量	约 360g
尺寸	175.1x203.1x85.8mm
工作温度	-10°C ~ 50°C
贮存温度	-20°C ~ +55°C

双耳从机 (WiTalk DRH)

双工模式	全双工模式
调制方式	高斯频移键控
载波频率	1787MHz-1928MHz
麦克风类型	电容式麦克风
操作距离	高达 400 米 (无障碍)
频响范围	300Hz-5KHz
射频输出功率	<24dBm
功耗	<0.5W
信噪比	≥ 65dB
失真	<1%
供电方式	3.7V/1200mAh 锂电池 或 USB-C 直流电 5V
续航时间	约 18 小时
重量	约 360g
尺寸	175.1x203.1x85.8mm
工作温度	-10°C ~ 50°C
贮存温度	-20°C ~ +55°C

单耳主机 (WiTalk SMH)

双工模式	全双工模式
调制方式	高斯频移键控
载波频率	1787MHz-1928MHz
麦克风类型	电容式麦克风
操作距离	高达 400 米 (无障碍)
频响范围	300Hz-5kHz
射频输出功率	<24dBm
功耗	<0.5W
信噪比	≥ 65dB
失真	<1%
供电方式	3.7V/1200mAh 锂电池 或 USB-C 直流电 5V
续航时间	约 10 小时 (一拖二) 约 5 小时 (一拖四)
重量	约 360g
尺寸	175.1x203.1x85.8mm
工作温度	-10°C ~ 50°C
贮存温度	-20°C ~ +55°C

单耳从机 (WiTalk SRH)

双工模式	全双工模式
调制方式	高斯频移键控
载波频率	1787MHz-1928MHz
麦克风类型	电容式麦克风
操作距离	高达 400 米 (无障碍)
频响范围	300Hz-5kHz
射频输出功率	<24dBm
功耗	<0.5W
信噪比	≥ 65dB
失真	<1%
供电方式	3.7V/1200mAh 锂电池 或 USB-C 直流电 5V
续航时间	约 18 小时
重量	约 360g
尺寸	175.1x203.1x85.8mm
工作温度	-10°C ~ 50°C
贮存温度	-20°C ~ +55°C

腰包主机 (WiTalk HUB)

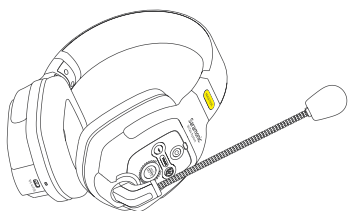
双工模式	全双工模式
调制方式	高斯频移键控
载波频率	1787MHz-1928MHz
操作距离	高达 400 米 (无障碍)
频响范围	300Hz-5kHz
射频输出功率	<24dBm
功耗	<0.5W
信噪比	≥ 65dB
失真	<1%
供电方式	3.7V/1200mAh 锂电池 或 USB-C 直流电 5V
续航时间	约 2.5 小时 (一拖八) 约 5 小时 (一拖四)
重量	约 180g
尺寸	27.6x119.4x46.5mm
工作温度	-10°C ~ 50°C
贮存温度	-20°C ~ +55°C

射频频段范围标准

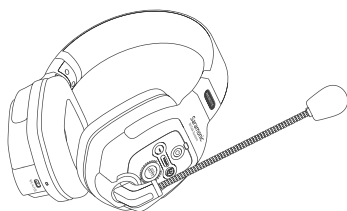
产品版本	频率范围	可使用区域
标准版本	1880-1900MHz	欧洲; 英国; 香港; 南非; 马来西亚; 澳大利亚; 新西兰
美国版本	1920-1930MHz	美国; 加拿大; 墨西哥
日本版本	1893-1906MHz	日本
台湾版本	1880-1895MHz	台湾
巴西版本	1910-1920MHz	巴西

最新的频段列表和更完整的国家清单, 请参考官方网站 www.saramonic.com

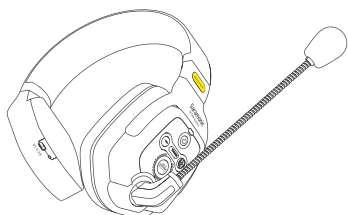
包装清单



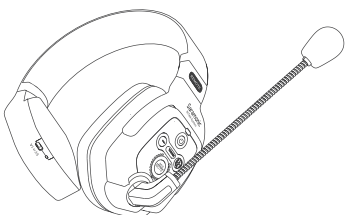
WiTalk 双耳主机



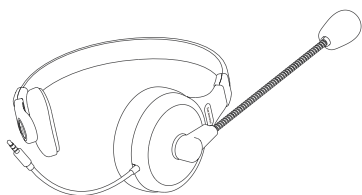
WiTalk 双耳从机



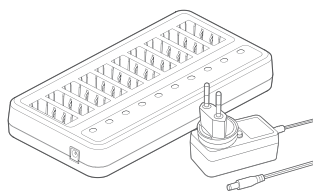
WiTalk 单耳主机



WiTalk 单耳从机



WiTalk 耳机



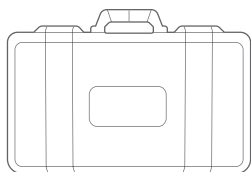
WiTalk 电池充电槽



WiTalk 腰包



WiTalk 电池



WiTalk 工具箱 (S/M/L)

WiTalk WT2D

- 1* WiTalk 双耳主机
- 1* WiTalk 双耳从机
- 2* WiTalk 电池
- 2* 充电线
- 1* WiTalk 工具箱 (S)

WiTalk WT2S

- 1* WiTalk 单耳主机
- 1* WiTalk 单耳从机
- 2* WiTalk 电池
- 2* 充电线
- 1* WiTalk 工具箱 (S)

WiTalk WT3D

- 1* WiTalk 双耳主机
- 2* WiTalk 双耳从机
- 3* WiTalk 电池
- 3* 充电线
- 1* WiTalk 工具箱 (S)

WiTalk WT3S

- 1* WiTalk 单耳主机
- 2* WiTalk 单耳从机
- 3* WiTalk 电池
- 3* 充电线
- 1* WiTalk 工具箱 (S)

WiTalk WT4D

- 1* WiTalk 双耳主机
- 3* WiTalk 双耳从机
- 4* WiTalk 电池
- 4* 充电线
- 1* WiTalk 工具箱 (S)

WiTalk WT4S

- 1* WiTalk 单耳主机
- 3* WiTalk 单耳从机
- 4* WiTalk 电池
- 4* 充电线
- 1* WiTalk 工具箱 (S)

WiTalk WT5D

- 1* WiTalk 双耳主机
- 4* WiTalk 双耳从机
- 5* WiTalk 电池
- 1* WiTalk 电池充电槽
- 1* WiTalk 工具箱 (M)

WiTalk WT5S

- 1* WiTalk 单耳主机
- 4* WiTalk 单耳从机
- 5* WiTalk 电池
- 1* WiTalk 电池充电槽
- 1* WiTalk 工具箱 (M)

WiTalk WT6D

- 1* WiTalk 腰包
- 5* WiTalk 双耳从机
- 6* WiTalk 电池
- 1* WiTalk 电池充电槽
- 1* WiTalk 耳麦机
- 1* WiTalk 工具箱 (M)

WiTalk WT6S

- 1* WiTalk 腰包
- 5* WiTalk 单耳从机
- 6* WiTalk 电池
- 1* WiTalk 电池充电槽
- 1* WiTalk 耳麦机
- 1* WiTalk 工具箱 (M)

WiTalk WT7D

- 1* WiTalk 腰包
- 6* WiTalk 双耳从机
- 7* WiTalk 电池
- 1* WiTalk 电池充电槽
- 1* WiTalk 耳麦机
- 1* WiTalk 工具箱 (L)

WiTalk WT7S

- 1* WiTalk 腰包
- 6* WiTalk 单耳从机
- 7* WiTalk 电池
- 1* WiTalk 电池充电槽
- 1* WiTalk 耳麦机
- 1* WiTalk 工具箱 (L)

WiTalk WT8D

- 1* WiTalk 腰包
- 7* WiTalk 双耳从机
- 8* WiTalk 电池
- 1* WiTalk 电池充电槽
- 1* WiTalk 耳麦机
- 1* WiTalk 工具箱 (L)

WiTalk WT8S

- 1* WiTalk 腰包
- 7* WiTalk 单耳从机
- 8* WiTalk 电池
- 1* WiTalk 电池充电槽
- 1* WiTalk 耳麦机
- 1* WiTalk 工具箱 (L)

WiTalk WT9D

- 1* WiTalk 腰包
- 8* WiTalk 双耳从机
- 9* WiTalk 电池
- 1* WiTalk 电池充电槽
- 1* WiTalk 耳麦机
- 1* WiTalk 工具箱 (L)

WiTalk WT9S

- 1* WiTalk 腰包
- 8* WiTalk 单耳从机
- 9* WiTalk 电池
- 1* WiTalk 电池充电槽
- 1* WiTalk 耳麦机
- 1* WiTalk 工具箱 (L)



For better recording experience, the application **SmartRecorder** is recommended.

为获得更好的录制体验，推荐使用枫笛 Saramonic 自主研发应用软件 **SmartRecorder**。



Scan the QR code and follow us!
扫描微信关注枫笛公众号!

Shenzhen Jiayz Photo Industrial., Ltd
深圳市长丰影像器材有限公司

A16 Building, Intelligent Terminal Industrial Park of Silicon Valley
Power, Guanlan, Longhua District, Shenzhen, China
深圳市龙华区观澜街道大富工业区硅谷动力智能终端产业园A16栋

JIAYZ 长丰 | 深圳市长丰影像器材有限公司

产品/零件名称	9076A 系列数码相机	比例	1:1	版本	V01
工程图号	9076A 系列数码相机	物料描述	100g 数码相机镜头零件 正负公差 P/D		
物料编号	F5330600040	尺寸/用量	14x21.5mm 1pc/a		
是否需要承认书	否	正负公差			
制图人/日期	杨帆 2022-12-14				

受控文件
2022/12/15
长丰影像

修改名称	版本	变更内容	变更日期	变更担当
	V01	首次发行	2022-12-14	杨帆