



©2023 Cherub Technology-All rights reserved. No part of this publication may be reproduced in any form without prior written permission of Cherub Technology.

[www.nuxaudio.com](http://www.nuxaudio.com)

Made in China

**NUX**



*New Generation Amp*



**TS/AC HD**  
WHITE-BOX AMP  
MODELING ALGORITHM

**Owner's manual**

**20 WATTS**  
**7 PRESETS**  
**8 EFFECT BLOCKS**  
**DRUM MACHINE**

## WARNING

To reduce the risk of fire or electric shock, do not expose this appliance to rain or moisture.

## CAUTION

This device complies with part 15 of the FCC Rules. Operation is subject to the following two conditions: (1) this device may not cause harmful interference, and (2) this device must accept any interference received, including interference that may cause undesired operation. Any changes or modifications not expressly approved by the party responsible for compliance could void the user's authority to operate the equipment.

**NOTE:** This equipment has been tested and found to comply with the limits for a Class B digital device, pursuant to Part 15 of the FCC Rules. These limits are designed to provide reasonable protection against harmful interference in a residential installation. This equipment generates, uses and can radiate radio frequency energy and, if not installed and used in accordance with the instructions, may cause harmful interference to radio communications. However, there is no guarantee that interference will not occur in a particular installation.

If this equipment does cause harmful interference to radio or television reception, which can be determined by turning the equipment off and on, the user is encouraged to try to correct the interference by one or more of the following measures:

- Reorient or relocate the receiving antenna.
- Increase the separation between the equipment and receiver.
- Connect the equipment into an outlet on a circuit different from that to which the receiver is connected.
- Consult the dealer or an experienced radio/TV technician for help.

The device has been evaluated to meet general RF exposure requirement. The device can be used in portable exposure condition without restriction.



The lightning symbol within a triangle means, "Electrical caution!" It indicates the presence of information about operating voltage and potential risks of electrical shock.



The exclamation point within a triangle means, "Caution!" Please read the information next to all caution signs.

# Introduction

Thank you for purchasing the NUX MIGHTY 20 MKII. Since launching the MIGHTY BT series in 2018, we have been hard at work incorporating the latest innovations in amp modeling into this brand-new version. We hope you enjoy using it.

The MIGHTY 20 MKII provides a variety of effects for electric guitar including amp modeling and 7 additional signal blocks. The signal chain is customizable, as you can rearrange the signal blocks as you like to create your own customized signal path. The TSAC-HD (White-Box) amp modeling algorithm and the outstanding classic D power amp design offer you realistic playability response akin to classic tube amplifiers. It's also quite pedal-friendly when connecting with your favorite external pedals. The MIGHTY 20 MKII can use the additional NBT-1 Bluetooth module to operate with the Mighty Amp™ application on your smartphone. You can also connect the MIGHTY 20 MKII via USB-B to PC for Mighty Editor™ operation. (You can load any WAV format IRs, the Mighty Editor™ will convert to 32bits/48kHz onto the device automatically.)

**NOTE: THE NBT-1 IS INCLUDED.**



**NBT-1 BLUETOOTH MODULE**

Download Mighty Amp™



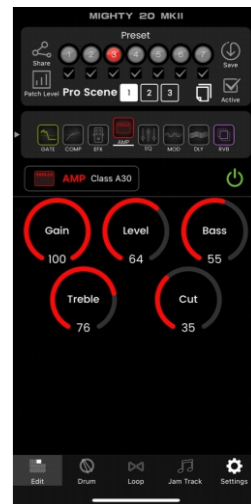
**Note:** When connecting the NBT-1 to the MIGHTY 20 MKII, please make sure the MASTER knob is set to the minimum value to avoid a “POP” noise.

You can customize the presets through the Mighty Amp™ App (mobile) or Mighty Editor™ edit software (PC). And you can change the order of the effect blocks along the signal path! You can do lots of things with the intuitive interface, experience it, feel the versatility and might!

**Mighty Editor™** PC software



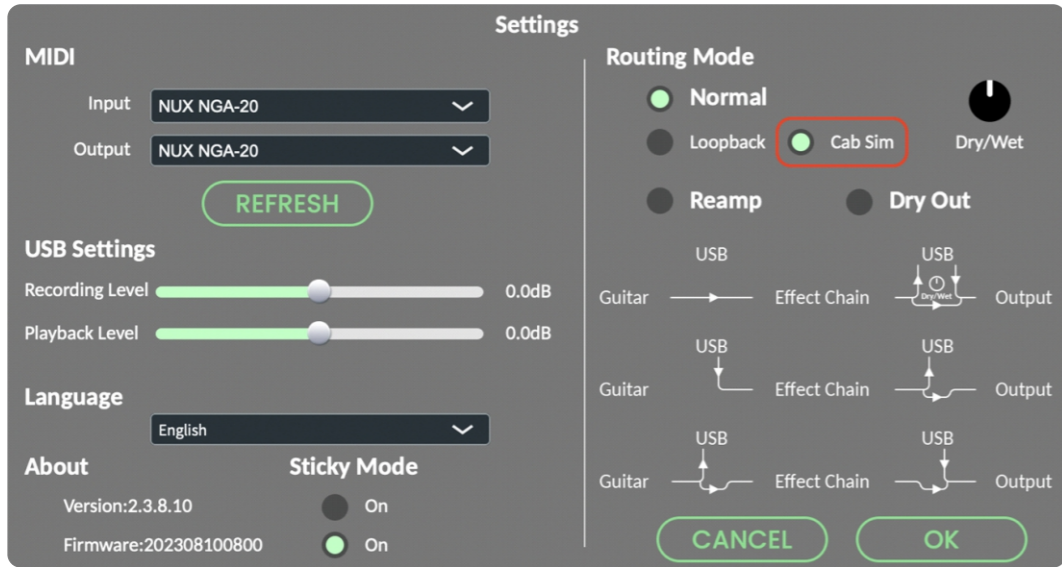
**Mighty Amp™** App



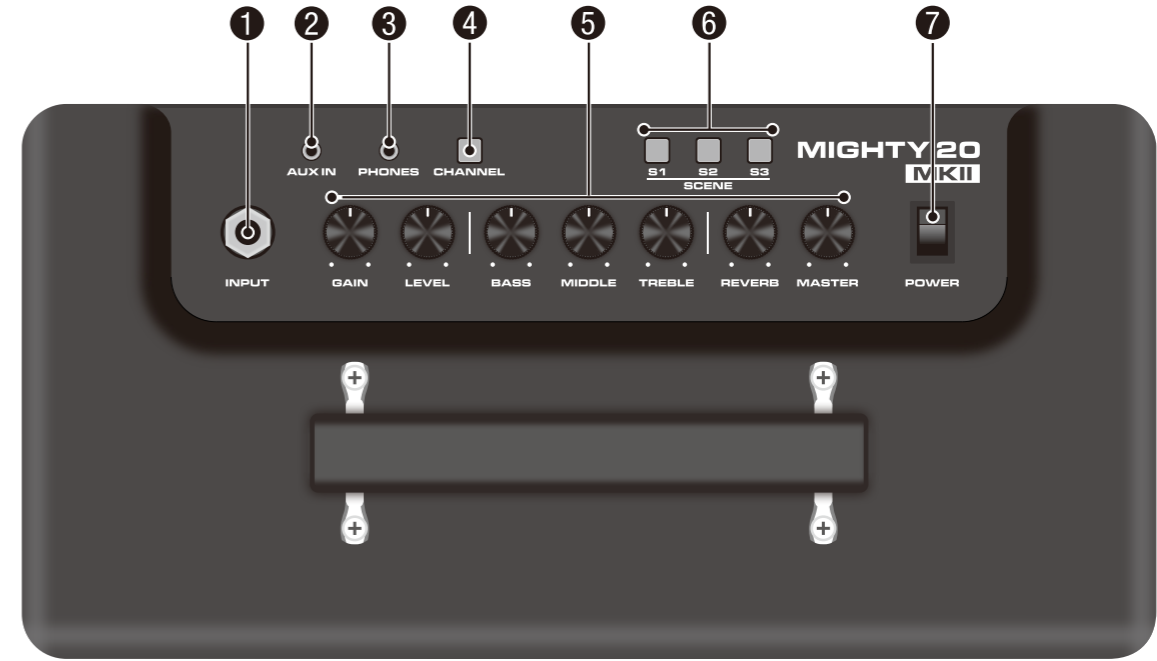
The Mighty Amp™ App and Mighty Editor™ edit software lets you adjust all the signal blocks and parameters. The MIGHTY 20 MKII includes GATE, COMP, EFX, AMP, EQ, MOD, DLY and RVB signal blocks which can be reordered freely.

The MIGHTY 20 MKII supports USB-B audio stream, which means that it can be an USB recording interface. It supports Normal / Dry Out / Re-amp / Loopback routing, you can adjust it via the Mighty Amp™ App or Mighty Editor™ edit software, no need to setup USB OUT in your DAW. You can even jam while live streaming with the Loopback option!

**Note:** As the MIGHTY 20 MKII uses guitar speaker, there is no IR block. If you want to record with the MIGHTY 20 MKII , just engage the “Cab Sim” for guitar recording.



•Control Panel





### 1 1/4" (6.35mm) INPUT jack



Use the Input jack to connect your guitar with a guitar cable.

### 2 AUX IN jack



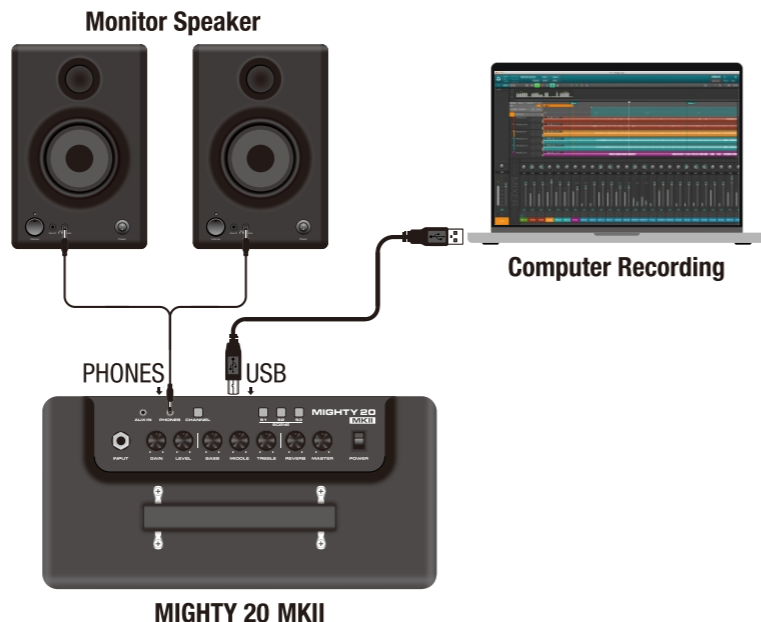
Use the Input jack to connect your guitar with a guitar cable.

### 3 PHONES out jack



Connect with headphones for silent practicing, the MIGHTY 20 MKII speaker will be automatically muted.

**Note:** Connect PHONES to monitor speakers while you use the MIGHTY 20 MKII as USB recording interface. Please setup "NGA-20" as your system input and output. As a reminder, you can engage "Cab Sim" on Mighty Editor™ to record the guitar signal with a full cab sound.



### 4 6 CHANNEL & SCENE indicator

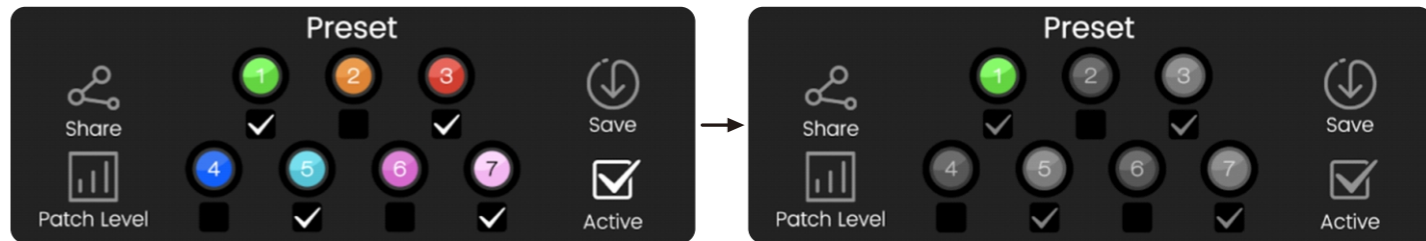


With the amp on, press the CHANNEL switch(indicator) to change the preset from 1~7. The indicator will display colors related to the specific presets.

**Note:** You can adjust which preset can be ACTIVE while you press the PRESET switch through Mighty Amp™ App or Mighty Editor™ edit software. (ACTIVE function)

### Mighty Amp™ App example

Choose preset 1, 3, 5, 7 and press Active icon (  ), then the device will know preset 1, 3, 5, 7 will be chosen while you press the PRESET switch.



Choose preset 1, 3, 5, 7 and press Active icon (  )

## Mighty Editor™ example

Click  icon, the 7 PRESETS will be COLORED.



Choose the ones you want to active, like 1, 3, 5, 7. Then press  icon again, Mighty Editor™ will show current preset, and according to the interface, you will see which is be chosen with .



The SCENE switch (indicator) is used to select a SCENE within a preset. SCENE's are an exciting feature, as you can store different parameters and even different models into each scene within a preset.

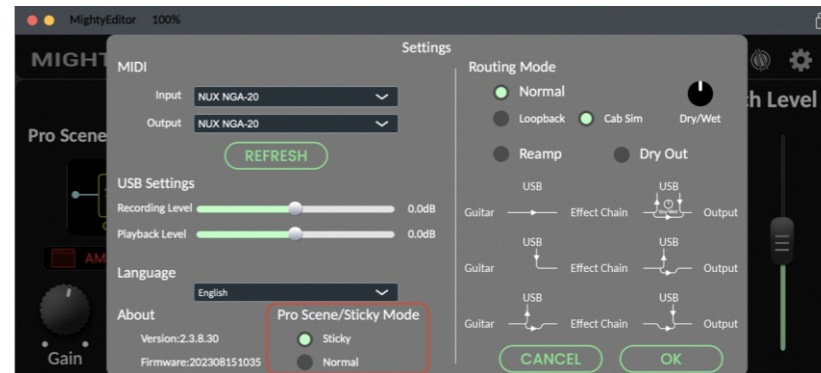


Pro Scene 1

Pro Scene 2

Pro Scene 3

Additionally, with you can engage “Sticky Mode”, which will remember the selected scene after you quit the preset. So, when you select that preset again, it will remember that selected “sticky” scene.



## ⑤ GAIN, LEVEL, BASS, MIDDLE, TREBLE, REVERB, MASTER knobs



KNOB	FUNCTION
GAIN	Controls AMP model's gain.
LEVEL	Controls AMP model's master.
BASS	Controls AMP model's EQ.
MIDDLE	
TREBLE	
REVERB	Controls RVB's mix level.
MASTER	Controls the device's overall volume.

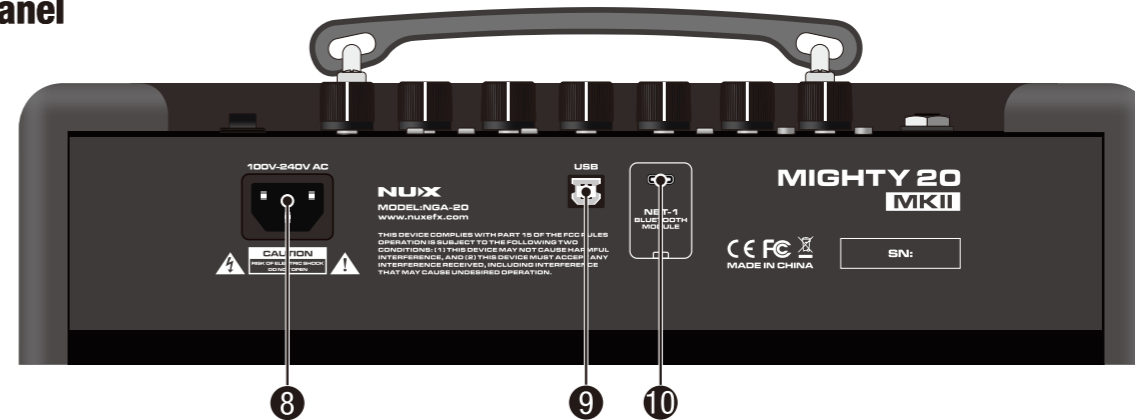
## ⑦ POWER switch



POWER

Toggle the POWER switch to boot-up the amplifier, while the amp is on, the CHANNEL indicator will turn on.

## • Back Panel



### ⑧ AC Power jack



Connect the included AC power cord to AC Power jack. It's universal power.

### ⑨ USB-B port



Connect the included AC power cord to AC Power jack. It's universal power.

### Recording

For WIN OS, please go to the product page to download

ASIO driver for recording.

For MAC OS, the device supports CORE AUDIO, so there is no need for driver.

### Firmware Update

Connect USB with PC, hold the CHANNEL switch and turn on the device by toggling POWER switch to enter to DFU (Device Firmware Update) mode. Then use DFU updater software to update the firmware. (You can get the firmware and firmware update guide on the product page.)

## ⑩ USB-C port



Please connect NBT-1 to this USB-C port.

**Note:** While you connect the NBT-1 onto MIGHTY 20 MKII, please make sure the MASTER knob is set to the minimum value to avoid a “POP” noise. When connecting a Bluetooth enabled mobile device to the MIGHTY 20 MKII's Bluetooth audio, you will hear a connection sound.



## Connect Bluetooth Audio

You can connect Bluetooth Audio from “Settings” on the mobile phone to play audio through the MIGHTY 20 MKII. Click “Settings” on the mobile phone. Enter “Bluetooth”, and choose “NUX NGA-20”, while you connect MIGHTY 20 MKII's Bluetooth audio, you will hear a connection sound.



**Note:** The Bluetooth audio and Bluetooth MIDI are independent, you have to connect them separately. Both of these connections must be made in order to use the MIGHTY 20 MKII's full functionality.

## Mighty Amp™ App connects with the device.

Launch the Mighty Amp™ App on your mobile phone, and press “Settings” to choose “Current Amp” as “MIGHTY 20 MKII”, then “Click to Scan Devices”. The App will find “NUX NGA-20”. Now select it, and the App will connect with the device.

**Note:** The App uses Bluetooth MIDI to communicate with the device.

**Note:** For Android OS, you may need to turn on GPS permission.

## PRIVACY NOTE

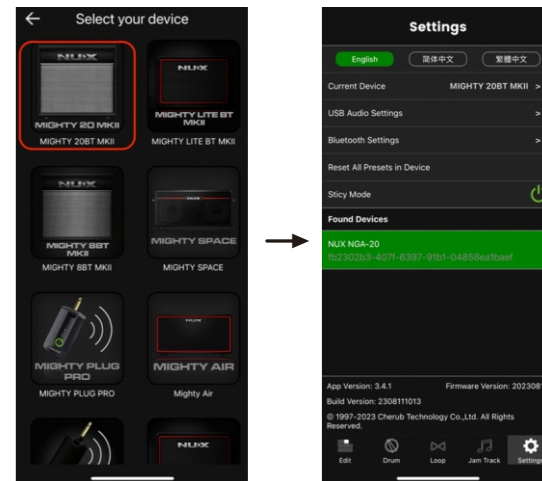
We do not use your GPS to track you.

Applications that scan for Bluetooth devices must request permission in the manifest file. This LOCATION permission is required because it may be possible to guess the location of an Android device by seeing which BTLE devices are nearby.

[https://developer.android.com/reference/android/media/midi/package-summary#btle\\_location\\_permissions](https://developer.android.com/reference/android/media/midi/package-summary#btle_location_permissions)

## Mobile App & Edit Software

Please download the Mighty Editor™ from the product page, and make sure your device's firmware version adapt with the editor version and App version.



## Features

---

- 20 watts bedroom Modeling Amplifier.
- TSAC-HD (White-Box) Amp Modeling algorithm offers realistic playability & feedback.
- Pedal-friendly amp that works well with your favorite external pedals.
- 7 presets with ACTIVE and Pro SCENE functions. (PRESET switch toggles ACTIVE ones sequentially. Pro Scenes can store different parameters even different models.)
- GATE, COMP, EFX, AMP, EQ, MOD, DLY, RVB effect blocks with free order.
- White-box algorithm EFX offers analog response and natural chaos.
- Patch Level function for each preset.
- 60s phrase loop with auto tempo detection drum machine.
- Intuitive Mighty Amp™ App & Mighty Editor™ edit software.
- USB-B: Mighty Editor™ edit software communication, USB audio stream, and Firmware update.

## Specifications

---

- Input Impedance: 1M  $\Omega$
- AUX In Impedance: 9.1K  $\Omega$
- Earphone Output: 280mW+280mW(To 33 ohms load)
- Sampling Rate: 48KHz / 32-bit
- System Latency: 1.42ms
- Speaker: 8", 4 $\Omega$  , 20W
- Dimensions: 380mm(L) x 186mm (W) x 340mm (H)
- Weight: 6.6 kg

\* Specification may change without notice.

### Accessories

- Power adapter
- NBT-1 Bluetooth Audio & MIDI Adaptor
- Owner's manual
- NUX sticker
- Warranty card



## 请注意！重要安全说明。 在连接使用前，请阅读以下说明。

**警告:** 为减少火灾或触电的危险，请勿将本产品置于雨中或潮湿的地方。

**注意:** 为避免火灾或触电等危险，请勿擅自拆卸本产品。维修本产品内部部件对于非专业人员来说较为困难，若有损坏请交给专业维修人员处理。

**注意:** 本产品已经过测试，证明符合FCC规则第15部分的B级数字设备的限制规定。操作应符合以下两个条件：（1）本产品不会产生有害干扰。（2）本产品必须接受任何干扰，包括可能会导致非正常操作的干扰。

1. 仅能使用与出厂附带规格相同的电源适配器。如果您不确定可用的电源类型，请咨询您的经销商。
2. 本产品不应遭受水滴或水溅，产品上不应放置诸如花瓶一类的装满液体的物品。
3. 请勿放置在热源附近，如散热器、电热器，或其它产生高热量的设备。
4. 请勿尝试自行维修本产品。如需维修，请联系我司售后热线，或交给专业的维修人员。
5. 本产品遭遇电源线或插头损坏、不明物体进入、进水等情况，请谨慎使用，并主动联系售后维修。
6. 如果长时间不使用本产品，应拔掉电源线。
7. 避免踩踏电源线，避免过度绷紧电源线。
8. 人耳长时间接收高音声音可能会导致无法挽回的听力损害，请始终保持“安全聆听”。



加贴该标识的设备仅按海拔2000m进行安全设计与评估，因此，仅适用于在海拔2000m以下安全使用，在海拔2000m以上使用，可能有安全隐患。



加贴该标识的设备仅按非热带气候条件进行安全设计与评估，因此，仅适用于在非热带气候条件下安全使用，在热带气候条件下使用时，可能有安全隐患。

请遵守所有的指示和注意所有警告并保留这些说明！

感谢您购买NUX MIGHTY 20 MKII多功能吉他音箱。相较于2018年发布的初代MIGHTY 20 BT，MIGHTY 20 MKII最大的亮点在于它应用了我们在音箱模拟领域的最新研发成果。我们由衷地希望您在使用这款音箱时能够感受到快乐，就像我们的工程师在取得技术突破后所经历的喜悦一样。

NUX MIGHTY 20 MKII内置了多种适用于电吉他的效果，包括模拟音箱和额外的8个效果模块（GATE, COMP, EFX, AMP, EQ, MOD, DLY和RVB模块）。整个信号链支持自定义，您可以根据自己的喜好重新排列效果模块。TSAC-HD白盒建模音箱模拟算法和出色的经典D类功放设计为您提供了类似于传统电子管音箱的逼真演奏响应。此外，MIGHTY 20 MKII还是一款效果器友好型音箱，可搭配您最喜爱的效果器使用。

将附赠的NBT-1蓝牙模块连接到MIGHTY 20 MKII后，您能够使用Mighty Amp™应用通过智能手机或平板电脑来切换MIGHTY 20 MKII的预设或调整预设设置。此外，您还可以将MIGHTY 20 MKII连接到您的电脑，通过Mighty Editor™编辑软件，以更加便捷的方式进行调节。

### 随机附赠NBT-1 蓝牙音频&MIDI适配器

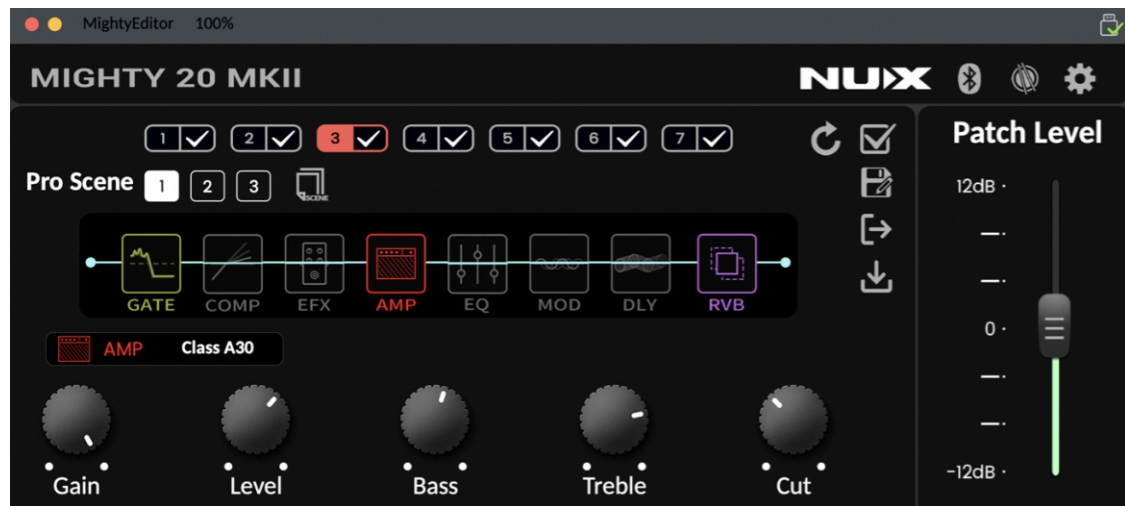


### 下载Mighty Amp™

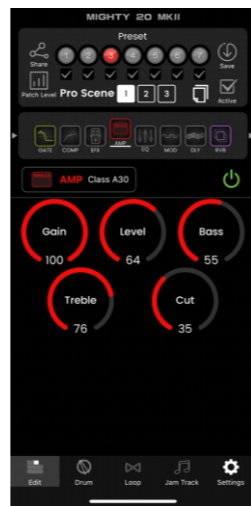


MIGHTY 20 MKII背部的USB-B接口可用于音频串流，这意味着您可以将其用作USB录音声卡。它支持四种录音模式，包括Normal / Dry Out / Re-amp / Loopback。您可以通过Mighty Amp™ App或Mighty Editor™编辑软件，根据您的实际需求进行调整。使用MIGHTY 20 MKII进行直播时，可以切换到Loopback模式进行即兴演奏。

Mighty Editor™ PC软件



Mighty Amp™ App



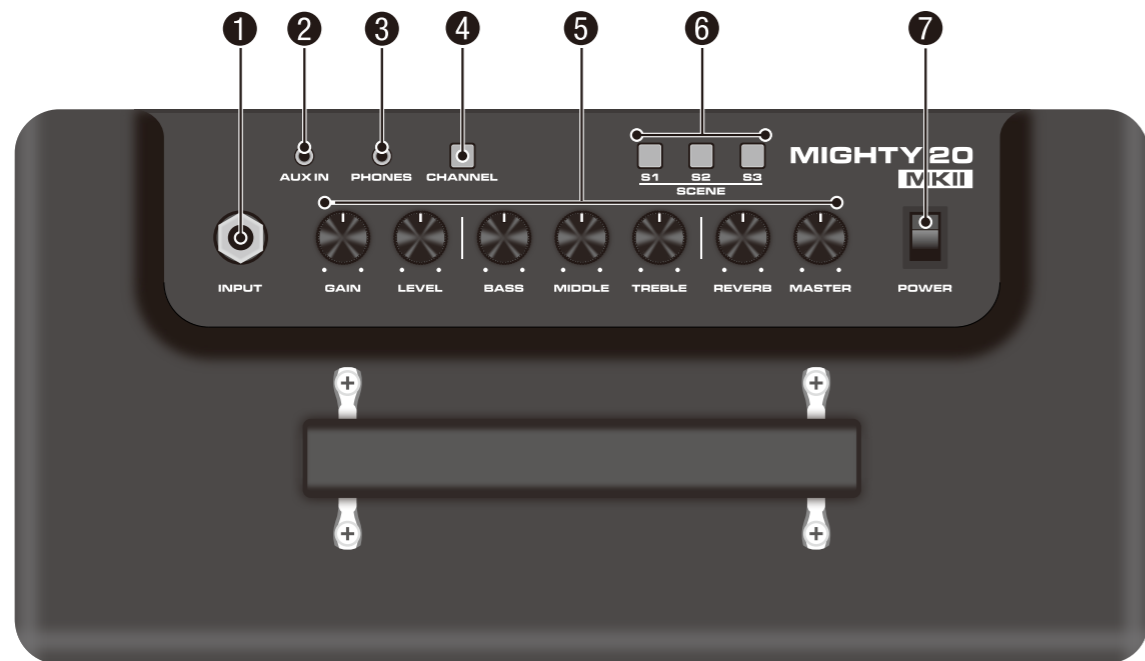
**请注意：**

由于MIGHTY 20 MKII采用了吉他喇叭，因此IR模块被移除了。如果您希望使用MIGHTY 20 MKII进行录音，我们建议您在Mighty Editor™编辑软件中启用“Cab Sim”，以获得更出色的录音效果。



# 操作说明

## •控制面板



### ① INPUT 接口



INPUT

6.35mm单声道输入接口，请使用品质可靠的连接线将您的电吉他接入此接口。

### ③ PHONES 接口



PHONES

3.5mm音频输出接口，可连接耳机进行静音练习。

**提示：**当您将MIGHTY 20 MKII用作USB录音接口（USB声卡）时，请将PHONES接口连接监听音箱。另外，请在您计算机的声音设置菜单中将输入和输出设置为“NGA-20”。

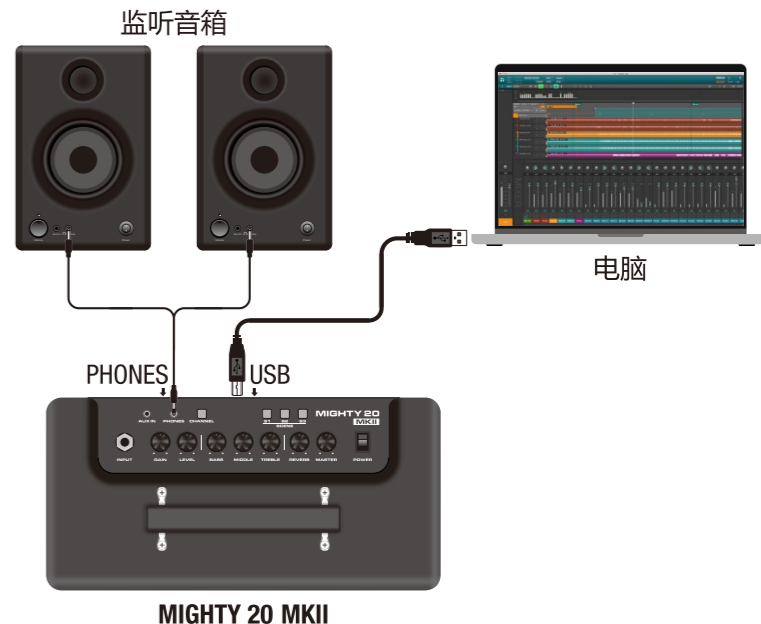
值得一提的是，您还可以在Mighty Editor™中启用“Cab Sim（箱体模拟）”功能来使录制的声音更加好听。

### ② AUX IN 接口



AUX IN

3.5mm音频输入接口，可连接外部音频播放设备播放伴奏。



## 4 6 CHANNEL及SCENE按键



CHANNEL按键，预设切换按键，MIGHTY 20 MKII内置7个预设。通过短按CHANNEL按键，您可以循环切换这些预设。当切换预设时，CHANNEL按键的背光灯颜色也会相应改变。您可能需要一些时间来熟悉预设和背光灯颜色之间的对应关系。

**提示：**您可以选择使用Mighty Amp™应用或Mighty Editor™音色编辑软件来创建自选预设。

自选预设：您可以勾选任意数量预设，以减少在切换预设时的步骤。

**例：**吉他手大鹏在日常练习时需要配置四个不同的预设。他使用了Mighty Editor™来进行调整，并在预设1、预设3、预设5以及预设7上进行了编辑和保存。随后，大鹏只需取消选择预设2、预设4以及预设6这三个预设并保存设置。现在，他可以通过按下CHANNEL按键来在这四个预设之间进行切换。



SCENE场景选择按键，MIGHTY 20 MKII新增了高级场景功能（Pro Scene），您可以在同一个预设下编辑并保存三个不同的高级场景。与普通场景只能记录效果模块的开关状态不同，高级场景允许您保存不同的效果模块参数，甚至可以在同一个效果模块下选择不同的效果模型。



Pro Scene 1



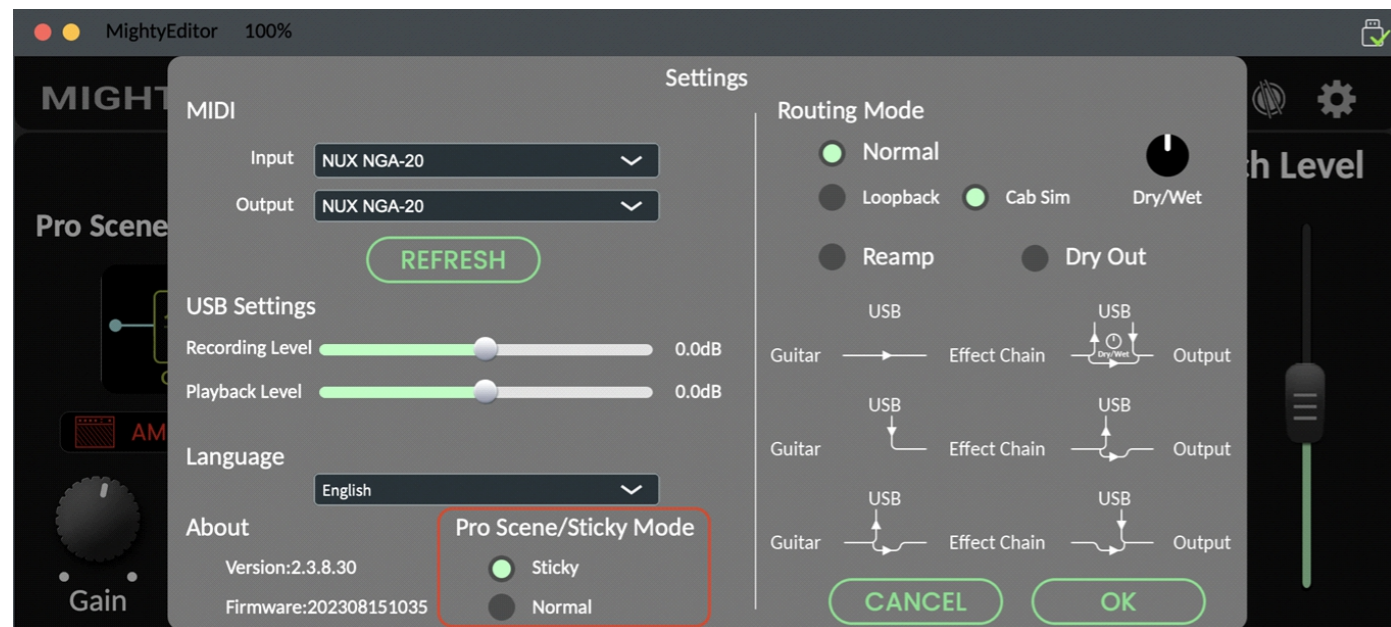
Pro Scene 2



Pro Scene 3



除此之外，您还可以在Mighty Editor™中启用“Sticky Mode（黏性模式）”。这个模式的主要优势在于，当您切换预设时，它会记住上一个预设中所选择的场景。这意味着，当您再次回到该预设时，它会自动调用之前记住的场景。



## ⑤ GAIN, LEVEL, BASS, MIDDLE, TREBLE, REVERB, MASTER旋钮



旋钮	功能
GAIN	增益调节旋钮，控制当前箱体模型的增益。
LEVEL	电平调节旋钮，控制当前箱体模型的输出电平。
BASS	三段均衡调节旋钮，控制当前箱体模型的均衡。
MIDDLE	
TREBLE	
REVERB	控制当前混响效果的混合比。
MASTER	控制MIGHTY 20 MKII输出音量的大小。

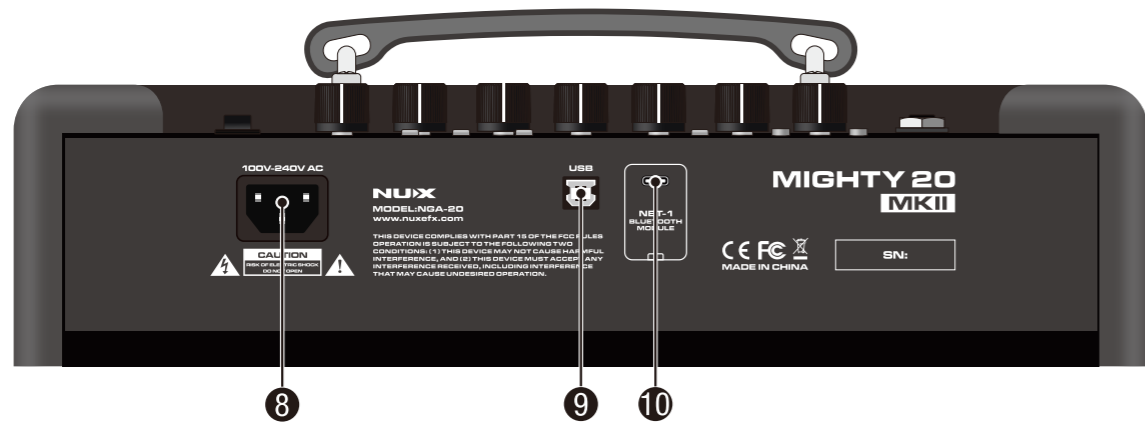
## ⑦ POWER开关



电源开关，用于开启或者关闭MIGHTY 20 MKII。当MIGHTY 20 MKII处于开启状态时，CHANNEL按键背光灯会亮起。



## •背部面板



### ⑧ AC Power接口



电源接口，请使用附带的官方电源线将MIGHTY 20 MKII连接到接地正常的电源插座。

### ⑨ USB-B接口



更稳定可靠的USB-B接口。可连接电脑进行固件更新、使用Mighty Editor™音色编辑软件以及录音。

#### USB录音功能说明

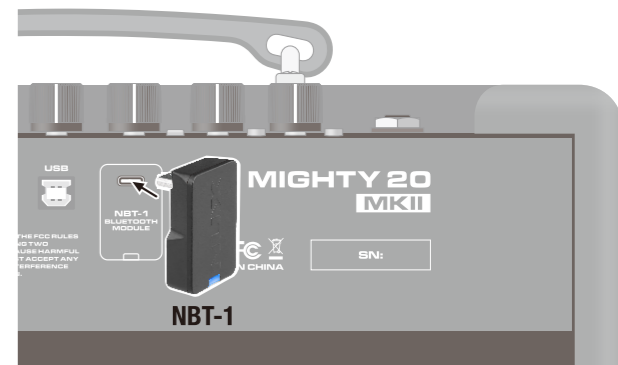
MIGHTY 20 MKII具备USB录音功能。Windows用户需要从MIGHTY 20 MKII产品页面下载并安装NUX ASIO驱动；MacOS则原生支持CORE AUDIO，无需安装驱动即插即用。

### ⑩ NBT-1 USB-C 接口



NBT-1蓝牙模块接口，您可以将附赠的NBT-1蓝牙模块连接至此接口。

**注意：**NBT-1蓝牙模块未连接时，Mighty Amp™将无法正常工作。在连接NBT-1蓝牙模块时，请确保首先将MASTER旋钮调至最小位置或者在连接之前关闭MIGHTY 20 MKII，以避免音箱产生出类似重击发出的“砰”声。当外部蓝牙设备与MIGHTY 20 MKII建立连接时，您会听到一个短暂的提示音。



## 使用蓝牙功能

### 蓝牙音频连接指南

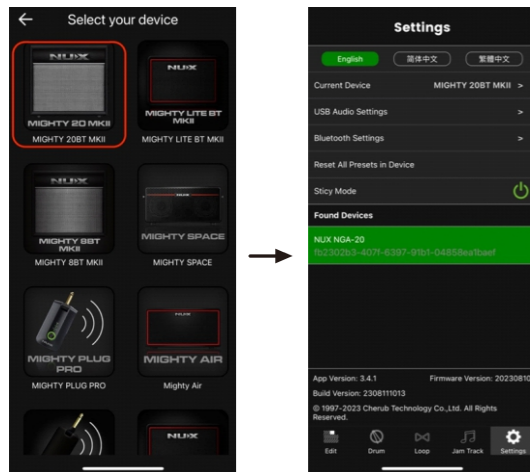
1. 确认NBT-1蓝牙模块已插入MIGHTY 20 MKII，且MIGHTY 20 MKII处于开机状态。
2. 进入手机或平板电脑的设置菜单，找到蓝牙设置选项。
3. 打开蓝牙设置，在设备列表中找到“NUX NGA-20”，点击连接即可。连接成功后，您将会听到一个短暂的提示音。



**注意：**蓝牙音频与蓝牙MIDI是相对独立的，初次使用MIGHTY 20 MKII时，您需要分别进行一次手动连接。只有在蓝牙音频和蓝牙MIDI连接都已建立的情况下，您才能使用MIGHTY 20 MKII的全部功能。

### 蓝牙MIDI连接指南

1. 确认NBT-1蓝牙模块已插入MIGHTY 20 MKII，且MIGHTY 20 MKII处于开机状态。
2. 打开您的手机或平板电脑上的Mighty Amp™应用。
3. 点击底部的“Settings”图标，进入设置列表，选择“Current Amp”，以进入设备选择页面，然后选中“MIGHTY 20 MKII”。
4. 选中设备后，点击设置列表底部的“Click to scan Device（点击后开始扫描设备）”按钮。Mighty Amp™应用将自动扫描附近的蓝牙MIDI设备。
5. 当“NUX NGA-20”出现在“Found Devices（已找到的设备）”下方时，点击“NUX NGA-20”进行连接。蓝牙MIDI连接成功后，您可以使用Mighty AMP™应用来控制MIGHTY 20 MKII。



**注意：** Mighty Amp™应用与MIGHTY 20 MKII是通过蓝牙MIDI来完成各项指令的。

**注意：** 大多数安卓用户可能需要在Mighty Amp™应用中启用位置权限，但我们不会收集您的个人信息。如果您想了解为何安卓需要此权限，请查看安卓官方的开发者文档：  
[https://developer.android.com/reference/android/media/midi/package-summary#btle\\_location\\_permissions](https://developer.android.com/reference/android/media/midi/package-summary#btle_location_permissions)

## 移动端和桌面端音色编辑软件

Mighty Amp™是NUX官方推出的移动端音色编辑软件，您可以直接从苹果应用商店和Google Play应用商店下载。

Mighty Editor™则是专为桌面端开发的音色编辑软件，您需要前往我们的官方网站，在MIGHTY 20 MKII产品页面下载。

**注意：** Mighty Amp™和Mighty Editor™都不向下兼容老版本固件，因此我们建议您先升级固件，以确保Mighty Amp™和Mighty Editor™可以正常运行。

## 产品特点

- 20瓦练习用多功能蓝牙电吉他音箱。
- TS/AC-HD白盒建模音箱模拟算法，提供真实的演奏手感和反馈。
- 效果器友好型音箱，可搭配您最喜爱的效果器使用。
- 7组预设，支持用户自选功能（ACTIVE PRESET）及高级预设场景功能（PRO SCENE）。
- 8大效果模块，支持自定义效果信号链。
- 内置鼓机。
- 配套易于上手的移动端和桌面端音色编辑软件。
- 更稳定可靠的USB-B接口，用于固件升级、音色编辑软件以及音频信号传输。

## 技术规格

- INPUT接口输入阻抗：1M $\Omega$
- AUX IN接口输入阻抗：9.1K $\Omega$
- PHONES OUT输出功率及阻抗：280mW+280mW（32 $\Omega$ ）
- 采样率：48KHz / 32-bit
- 系统延迟：1.42ms
- 喇叭：8”，4 $\Omega$ ，20W
- 体积：380mm(L) x 186mm (W) x 340mm (H)
- 重量：6.6 kg

\*技术规格如有变更，恕不另行通知。

### 随机附件

- 电源线
- NBT-1蓝牙音频&MIDI适配器
- 使用说明书
- NUX贴纸
- 保修卡

## 有关产品中所含有害物质含量的说明

为了控制和减少电器电子产品废弃后对环境造成的污染，本资料就本公司产品中所含的特定有害物质含量及其安全性予以说明。本资料适用于2022年12月31日以后本公司所制造的产品。

### 环保使用期限



此标志适用于在中国国内销售的电子信息产品，表示环保使用期限的年数。所谓环保使用期限是指在制造日起的规定的期限内，产品中所含的有害物质不致引起环境污染，不会对人体、财产造成严重的不良影响。环保使用期限仅在遵照产品使用说明，正确使用产品的条件下才有效。不当的使用，将会导致有害物质泄漏的危险。

## 产品中所含有害物质含量说明

项目	限量	
	A类	B类
邻苯二甲酸酯类物质的限量	○	○
多环芳烃类物质的限量	○	○
可迁移元素物质的限量	○	○
苯系物、总挥发有机化合物及甲醛物质的限量	○	
五氯苯酚 (PCP) 物质的限量	○	
电子部件限用物质的限量	○	
天然放射性核素的限量	○	

\*上表当中的信息依据GB 28489-2022仅在产品含有其中限量要求项目时适用。

本表格依据GB 28489-2022的规定编制。

○表示该有害物质在该部件所有均质材料中的含量均在GB 28489-2022第五章规定的限量要求以下。

### 保护环境

如果需要废弃本产品，请遵循本地相关指引，请勿随意丢弃或作为生活垃圾处理，以避免对环境造成污染。

## 质量承诺

亲爱的 **NUX** 用户：

在您使用 **NUX** 产品时，请仔细阅读产品说明书，当您有疑问和困难时请拨打售后服务热线：**400-990-9866**

- 一周内出现质量问题可退货退款
- 一年内出现质量问题可免费维修
- 一月内出现质量问题可调换
- 终身享有咨询和维修服务

[ 请向销售商索取正规发票并予以保存 ]

## 换修政策

一、包换政策：

- 1、消费者通过正规授权渠道购买的产品，自购机之日起1个月之内，在正常使用情况下出现非人为的产品性能故障、且产品外观及包装保持完好，可向所购机的经销商换机。
- 2、消费者在换机时应出示由经销商开出的购机凭证，否则经销商可以不予更换。

二、保修政策：

- 1、消费者通过正规授权渠道购买的产品(以发票所示销售方为准)，自购买之日起1年内，若出现非人为损坏的性能故障，可享受免费维修服务。
- 2、对于超过1年或人为及不可抗力因素造成损坏的产品，我司可提供有偿维修服务。

\*本售后政策仅适用于中国大陆地区，其它国家及地区以当地售后政策及法律法规为准。

### 售后服务地址

广东省珠海市高新区唐家湾镇科技九路10号  
珠海市蔚科科技开发有限公司 售后服务部  
邮编: 519085

制造商: 珠海市蔚科科技开发有限公司  
生产商: 珠海市蔚科科技开发有限公司  
地址: 珠海市高新区唐家湾镇科技九路10号  
电话: 0756-3689866  
网址: cn.nuxaudio.com

## 合格证

Certificate

检验员  
Inspector

生产日期  
Date

本产品经检验合格  
This product is inspected and approved.

名称  
Name

型号  
Type

执行标准: Q/WKDZ 002-2020  
Product is certificated with Q/WKDZ 002-2020